

DA

AN

AG

OP

PR

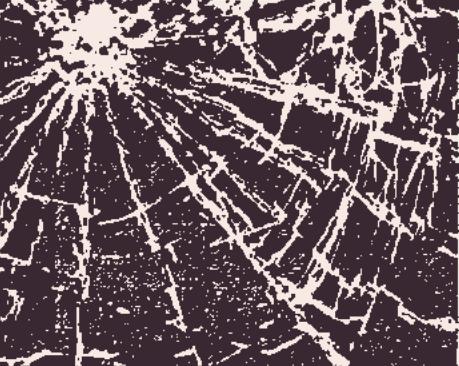
THE



MEDIUM



IS



THE

MESSAGE



OBEY EYESORES AND
PETTY VANDALISM

MEN'S COLLECTION
FALL 2018

THE OBEY CAMPAIGN CAN BE EXPLAINED AS AN EXPERIMENT IN PHENOMENOLOGY. THE FIRST AIM OF PHENOMENOLOGY IS TO REAWAKEN A SENSE OF WONDER ABOUT ONE'S ENVIRONMENT. THE OBEY CAMPAIGN ATTEMPTS TO STIMULATE CURIOSITY AND BRING PEOPLE TO QUESTION BOTH THE CAMPAIGN AND THEIR RELATIONSHIP WITH THEIR SURROUNDINGS. BECAUSE PEOPLE ARE NOT USED TO SEEING ADVERTISEMENTS OR PROPAGANDA FOR WHICH THE MOTIVE IS NOT OBVIOUS, FREQUENT AND NOVEL ENCOUNTERS WITH OBEY PROPAGANDA PROVOKE THOUGHT AND POSSIBLE FRUSTRATION, NEVERTHELESS REVITALIZING THE VIEWER'S PERCEPTION AND ATTENTION TO DETAIL. TO CATALYZE A THOUGHTFUL DIALOGUE DECONSTRUCTING THE PROCESS OF IMAGE ABSORPTION IS THE ULTIMATE GOAL. ALL IN THE NAME OF FUN AND OBSERVATION.

THE MEDIUM IS THE MESSAGE.



17462 VON KARMAN AVE.
IRVINE, CA 92614
U.S.A.
PHONE 949.596.8400 / FAX 949.596.8437
WWW.OBEYCLOTHING.COM
WWW.OBEYGIANT.COM

SALES REPRESENTATIVES

PACIFIC NORTHWEST

BURL DARDEN
64171 TUMALO RIM DRIVE
BEND, OR 97701
P: 541.385.3302 / F: 541.385.3302
E: BURL@OBEYCLOTHING.COM

LEVI CAMPBELL
2039 SE 29TH AVE.
PORTLAND, OR 97214
P: 360.510.6811
E: LEVI@OBEYCLOTHING.COM

LOS ANGELES

CHRIS SUGINO
18595 SANTA RAMONA ST.
FOUNTAIN VALLEY, CA 92708
C: 702.326.3483
E: CHRIS.SUGINO@OBEYCLOTHING.COM

ORANGE COUNTY / SAN DIEGO

MARK MAZZA
20091 SHOREWOOD CIRCLE
HUNTINGTON BEACH, CA 92649
C: 714.614.7901 / F: 714.964.3676
E: MDMSALES@ME.COM

HAWAII / GUAM

NOEL MARCHAN
95-1038 AINAMAKUA DR. #H
MILILANI, HI 96789
P: 808.676.5290
E: NMARCHAN@AOL.COM

NOR CAL / NEVADA / ARIZONA / NEW MEXICO

JENNIFER L. ZWEIG
8161 SKYLINE BLVD.
OAKLAND, CA 94611
C: 510.388.4418
E: JLZ@OBEYCLOTHING.COM

MIDWEST

LAURA KARELS
13816 SHIRLEY DR.
BURNSVILLE, MN 55337
P: 952.461.4218 / F: 952.461.4219
E: LAURA_KARELS@YAHOO.COM

NORTHEAST

JOE COMBA
26 AVON RD.
NEW ROCHELLE, NY 10804
C: 914.393.9897
E: JOE@OBEYCLOTHING.COM

MID ATLANTIC / SOUTHEAST

ANDREW MERCIER
10777 BISHOPVILLE RD.
BISHOPVILLE, MD 21813
C: 443.614.4422
E: MERCIER@OBEYCLOTHING.COM

INTERNATIONAL

NICK LHOTSKY
17462 VON KARMAN AVE.
IRVINE, CA 92614 U.S.A.
P: 949.596.8400 X263 / C: 443.373.3283
F: 949.596.8437
E: NICK@OBEYCLOTHING.COM

TABLE OF CONTENTS

CUT & SEW

4
ART SHOW FEATURE:
DAMAGED

21
"EASY" TRACK GROUP

40
SWEATERS

78
LEATHER ACCESSORIES

8
89 GROUP

23
"BORSTAL" TRACK GROUP

42
WOVENS

82
BAGS & ACCESSORIES

12
BIG BOY GROUP

23
"SAUCER" VELOUR GROUP

48
CUSTOM FLEECE

84
BELTS

16
HARD WORK GROUP

24
DENIM

54
KNITS

85
TOTES & SOCKS

19
"EYES" DENIM GROUP

30
DENIM FIT GUIDE

60
PANTS

88
ESSENTIALS

19
"EYES" GROUP

32
LEATHERS

66
PANTS FIT GUIDE

89
P.O.P.

21
"LENSE" TRACK GROUP

34
JACKETS

68
HEADWEAR

90
CUT & SEW CATAGORIES
ROUND UP

PRINTABLES

96
ARTIST SERIES:
MARILYN RONDON

117
BASIC PULLOVER
HOOD FLEECE

124
CUSTOM PIGMENT CREW &
ANORAK HOODED FLEECE

135
HOODED SNAP COACHES &
CLASSIC COACHES JACKET

98
HEAVYWEIGHT CLASSIC BOX
TEE

118
BASIC BOX CREW
NECK FLEECE

125
CUSTOM PIGMENT MOCK
NECK FLEECE

136
ANORAK PULLOVER HOOD

102
PREMIUM / BASIC TEES

119
BASIC ZIP HOOD

127
BLEACH TIE DYE TEE

137
PRINTABLE FIT GUIDE

114
BASIC POCKET TEES

121
CUSTOM HEAVYWEIGHT
PIGMENT TEE

128
BLEACH TIE DYE LONG
SLEEVE TEE

115
PREMIUM CONTRAST TEE

122
CUSTOM PIGMENT LONG
SLEEVE TEE

129
BLEACH TIE DYE HOODED &
CREW FLEECE

116
BASIC LONG SLEEVE TEES

123
CUSTOM PIGMENT
HOODED FLEECE

131
SUPERIOR TEE

DAMAGED

NEW WORKS BY
SHEPARD FAIREY



LOS ANGELES NOV. 11, 2017

“Damaged” opened in Los Angeles, presented by Library Street Collective. It was his first-ever solo show in L.A.

Referencing Black Flag’s 1981 album “Damaged,” but inspired by a critical look at social issues that are currently in a state of crisis, Fairey’s show served as a reflection on the damaged state of politics, media, human rights, the global approach to the environment, and more.

The exhibition showcased never-before-seen paintings, large-scale sculptures, installations, etchings, retired stencils, a printed newspaper titled “The Damaged Times,” prints on wood and metal, and a display of various do-it-yourself tools of empowerment.






BUY FAIR



BE FAIR

FAIR TRADE



A close-up photograph of cotton bolls on a branch against a clear blue sky. The cotton is bright white and fluffy, with some yellowish-brown husks still attached. The branch is brown and woody, with some green leaves visible in the background.

FAIR TRADE IS A MARKET-BASED APPROACH THAT EMPOWERS FACTORY WORKERS AND FARMERS TO FIGHT POVERTY, PRODUCE QUALITY PRODUCTS, PROTECT THE ENVIRONMENT, AND BUILD STRONG THRIVING COMMUNITIES FOR GENERATIONS TO COME. AT THE SAME TIME, FAIR TRADE USA'S FAIR TRADE CERTIFIED™ LABEL EMPOWERS YOU, THE CONSUMER, WITH THE KNOWLEDGE THAT YOUR PURCHASE HAS A POSITIVE IMPACT ON THE PEOPLE WHO SEW AND GROW THE PRODUCTS YOU LOVE. FOR EVERY OBEY FAIR TRADE CERTIFIED™ PRODUCT SOLD, A PERCENTAGE IS PAID DIRECTLY TO A SPECIAL FUND FOR THE WORKERS THAT CREATE OUR GOODS. THEY DECIDE COLLECTIVELY HOW TO SPEND THESE FUNDS BASED ON THE COMMUNITY'S GREATEST NEEDS: FROM SCHOLARSHIPS AND SCHOOL BUSES, TO MEDICAL CARE AND DISASTER RELIEF SERVICES.

"SOCIAL RESPONSIBILITY AND JUSTICE HAVE ALWAYS BEEN VERY IMPORTANT TO OBEY IN BOTH MESSAGE AND PRACTICE. WE WORK WITH MANUFACTURERS THAT PROVIDE A FAIR WAGE AND ETHICAL WORKING CONDITIONS, AND HAVE NOW MADE THE FURTHER STEP TO BECOME AN OFFICIAL FAIR TRADE USA PARTNER (WWW.FAIRTRADEUSA.ORG). OUR FAIR TRADE CERTIFIED™ GARMENTS ARE PRODUCED IN FACTORIES THAT OPERATE AGAINST RIGOROUS SOCIAL, ENVIRONMENTAL AND ECONOMIC STANDARDS, WHERE WORKERS CAN DO THEIR JOBS WITH PRIDE AND DIGNITY. FOR EVERY FAIR TRADE CERTIFIED PRODUCT SOLD, WORKERS EARN MORE MONEY TO FIGHT POVERTY AND FUND COMMUNITY DEVELOPMENT. OUR HOPE IS NOT ONLY TO BENEFIT THE WORKERS OF THE FAIR TRADE FACTORIES, BUT TO LEAD BY EXAMPLE AND PROMOTE THE EXPANSION OF THE FAIR TRADE APPAREL PROGRAM."

- SHEPARD FAIREY

89 GROUP



131030079 EIGHTY NINE ICON BOX TEE LS

89 GROUP

EIGHTY NINE WOVEN LS

181200192

- Slim fit long sleeve button up shirt
- A proper button down collar shirt in oxford with thin contrast piping at underside of collarstand. Half Face patch at front chest and flag label at side seam. White pearlized buttons for closures
- 100% Cotton



A.

	COLOR	S	M	L	XL	XXL
A.	WHITE					

EIGHTY NINE STRIPES LS

181200193

- Slim fit long sleeve button up shirt
- A proper button down collar shirt in stripe oxford with a thin contrast piping at underside of collarstand. Half Face patch at front chest and flag label at side seam. White pearlized buttons for closures
- 100% Cotton



A.



B.

	COLOR	S	M	L	XL	XXL
A.	PINE MULTI					
B.	BLACK MULTI					

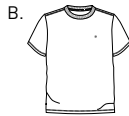
EIGHTY NINE SOLID BOX TEE SS

131080226

- Custom box fit
- Short sleeve crew neck tee with solid rib trims. Features a heavyweight carded jersey fabrication and half face patch at chest
- Fair trade factory certified
- 100% Cotton



A.



B.



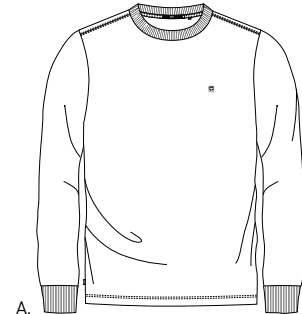
C.

	COLOR	S	M	L	XL	XXL
A.	PINE					
B.	WHITE					
C.	BLACK					

EIGHTY NINE SOLID BOX TEE LS

131030078

- Custom box fit
- Long sleeve crew neck tee with solid rib trims. Features a heavyweight carded jersey fabrication and half face patch at chest
- Fair trade factory certified
- 100% Cotton



A.



B.



C.

	COLOR	S	M	L	XL	XXL
A.	WHITE					
B.	BLACK					
C.	PINE					

EIGHTY NINE ICON BOX TEE SS

131080227

- Custom box fit
- Short sleeve crew neck tee with solid rib trims. Features a heavyweight carded stripe jersey fabrication and half face patch at chest
- Fair trade factory certified
- 100% Cotton



A.



B.

	COLOR	S	M	L	XL	XXL
A.	PINE MULTI					
B.	BLACK MULTI					

EIGHTY NINE ICON BOX TEE LS

131030079

- Custom box fit
- Long sleeve crew neck tee with solid rib trims. Features a heavyweight carded stripe jersey fabrication and half face patch at chest
- Fair trade factory certified
- 100% Cotton



A.



B.

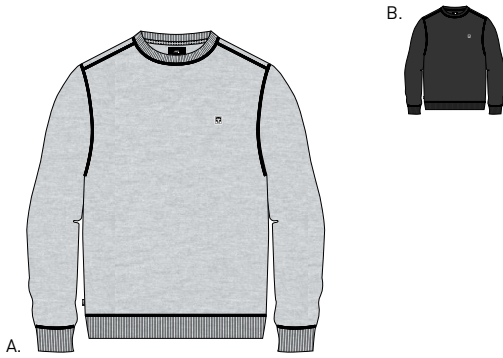
	COLOR	S	M	L	XL	XXL
A.	BLACK MULTI					
B.	PINE MULTI					

89 GROUP

EIGHTY NINE ICON CREW

111600069

- Slim fit
- Fleece crew neck with solid rib trims. Features a half face patch at chest, french terry fabrication and novelty stitching along seams
- Solid : 80% Cotton / 20% Polyester; Heather Grey: 55% Cotton / 45% Polyester

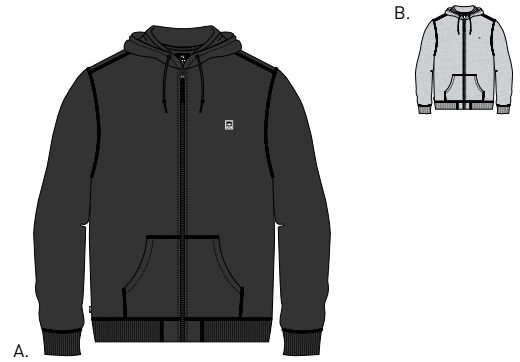


	COLOR	S	M	L	XL	XXL
A.	HEATHER GREY					
B.	BLACK					

EIGHTY NINE ICON ZIP HOOD

111620024

- Slim fit
- Hooded fleece pullover with solid rib trims. Features a half face patch at chest, French terry fabrication and novelty stitching along seams
- Solid : 80% Cotton / 20% Polyester; Heather Grey : 55% Cotton / 45% Polyester



	COLOR	S	M	L	XL	XXL
A.	BLACK					
B.	HEATHER GREY					

EIGHTY NINE 6 PANEL HAT III

100580162

- Unstructured 6 panel strapback hat
- Low profile crown height with curved visor, half face patch and self fabric strap closure
- 100% Cotton



	COLOR	O/S		COLOR	O/S
A.	PINE		B.	BLACK	

EIGHTY NINE BEANIE

100030072

- Medium height cuffed beanie
- Features jersey knit construction and half face patch
- 100% Acrylic



	COLOR	O/S		COLOR	O/S
A.	BLACK		B.	PINE	



BIG BOY GROUP



LOITER BIG FIT PANT
LOOSE FIT



- SITS BELOW WAIST
- FULL SEAT AND THIGH
- FULL STRAIGHT LEG
- FLOODED INSEAM
- 18" LEG OPENING

SITS BELOW WAIST

FULL STRAIGHT LEG

18" LEG OPENING

LOITER BIG FIT PANT

142020099

- Loose straight fit
- Timeless work pant with flooded inseam length. Features zipper fly closure, slash front pockets, single welt back pockets and woven label at back right pocket.
- 100% Cotton



	COLOR	28	30	31	32	33	34	36	38
A.	BLACK								
B.	KHAKI								

FUBAR BIG FIT PANT
LOOSE FIT



- SITS BELOW WAIST
- FULL SEAT AND THIGH
- FULL TAPERED LEG
- FLOODED INSEAM
- 17" LEG OPENING

SITS BELOW WAIST

FULL TAPERED LEG

17" LEG OPENING

FUBAR PLEATED PANT

142020106

- Loose straight fit
- Timeless pleated work pant with flooded inseam length. Features zipper fly closure, slash front pockets, single welt back pockets and woven label at back right pocket
- SOLID: 100% Cotton HEATHER CHARCOAL: 60% Cotton / 40% Polyester



COLOR 26 28 30 31 32 33 34 36 38

A.	PINE GREEN								
B.	BLACK								
C.	BURNT OLIVE								
D.	HEATHER CHARCOAL								

FUBAR CARGO PANT

142020103

- Loose straight fit
- Military-inspired, oversized and pleated cargo pant with flooded inseam length. Features, zipper fly closure, slash front pockets, cargo pockets, and eyes logo label at back pocket
- 100% Cotton



COLOR 28 30 31 32 33 34 36 38

A.	OVERSIZE CAMO								
B.	DRIP CAMO								

BIG BOY GROUP

BIG BOY PANTS BASIC TEE

- Regular fit crew neck tee with rib neck trim
- Made with heavyweight cotton
- Solid: 100% Cotton; Heather Grey: 90% Cotton / 10% Polyester

163081595



	COLOR	S	M	L	XL	XXL
A.	BLACK					
B.	HEATHER GREY					
C.	WHITE					

BIG BOY PANTS BASIC LONG SLEEVE TEE

- Regular fit crew neck long sleeve tee with rib neck trim
- Made with heavyweight cotton
- Solid: 100% Cotton; Heather Grey: 90% Cotton / 10% Polyester

164901595



	COLOR	S	M	L	XL	XXL
A.	HEATHER GREY					
B.	WHITE					
C.	BLACK					

BIG BOY PANTS BASIC CREW NECK

- Regular fit crew neck fleece with rib trims and set in sleeves
- 50% Cotton / 50% Polyester

111741595



	COLOR	S	M	L	XL	XXL
A.	WHITE					
B.	ASH					
C.	BLACK					

BIG BOY 6 PANEL HAT

- Cotton twill low profile 6 panel hat with direct embroidery and self fabric closure
- 100% Cotton

100580100



	COLOR	O/S		COLOR	O/S
A.	KHAKI		B.	BLACK	

BIG BOY BELT

- Adjustable webbing belt with antique silver hardware and a OBEY original label
- 60% Cotton / 40% Polyester

100050026



	COLOR	O/S		COLOR	O/S
A.	RASPBERRY		D.	WHITE	
B.	PINE		E.	BLACK	
C.	DUSTY ORANGE				

HARD WORK GROUP



HARD WORK GROUP

HARD WORK LABOR JACKET

121800351

- Regular fit
- A workwear style jacket with four patch pockets at front and logo shank buttons at center front. This style is offered in unique prints. Eyes woven label at front chest pocket
- 100% Cotton

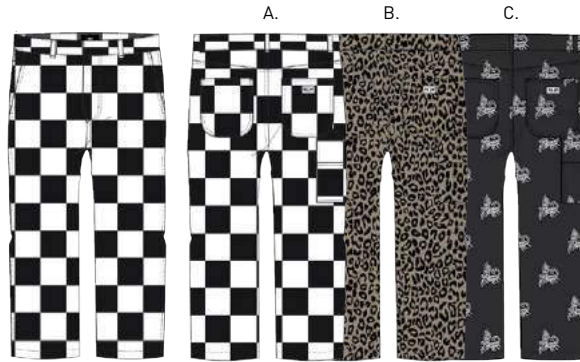


	COLOR	S	M	L	XL	XXL
A.	CHECKER					
B.	KHAKI LEOPARD					
C.	BLACK MULTI					

HARDWORK LABOR PANT

142020121

- Loose straight fit
- Timeless carpenter pant. Features zipper fly closure, slash front pockets, patch back pockets, carpenter pocket details and woven label at back right pocket
- 100% Cotton



	COLOR	26	28	30	31	32	33	34	36	38
A.	CHECKER									
B.	KHAKI LEOPARD									
C.	BLACK MULTI									

EYES GROUP

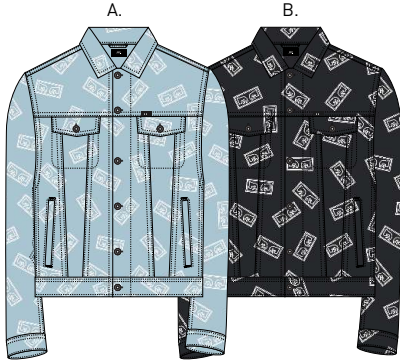


“EYES” DENIM GROUP

BENDER EYES JACKET

121800354

- Slim fit
- A classic denim jacket style with pocket flaps and bottom welt pockets. Adjustable tabs at back bottom waist with all closures in logo button shanks. All over Eyes print at body and sleeve
- 100% Cotton

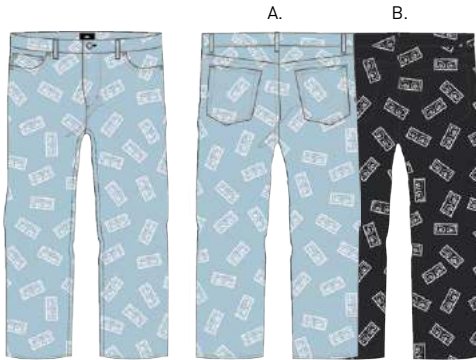


	COLOR	S	M	L	XL	XXL
A.	EYES LIGHT INDIGO MULTI					
B.	EYES BLACK MULTI					

BENDER EYES DENIM

142010064

- Standard fit
- Classic five pocket denim with flooded inseam length. Features Eyes all over print, zipper fly, logo shank button closure, coin pocket, and logo label at back pocket.
- 100% Cotton



	COLOR	28	30	31	32	33	34	36	38
A.	EYES LIGHT INDIGO MULTI								
B.	EYES BLACK MULTI								

“EYES” GROUP

RISE UP BDU JACKET

121800341

- Regular fit
- A military cotton ripstop, BDU style jacket with hidden snap and zipper closure at center front. Four patch pockets at front with hidden button closure and Eyes woven label at chest pocket flap
- 100% Cotton

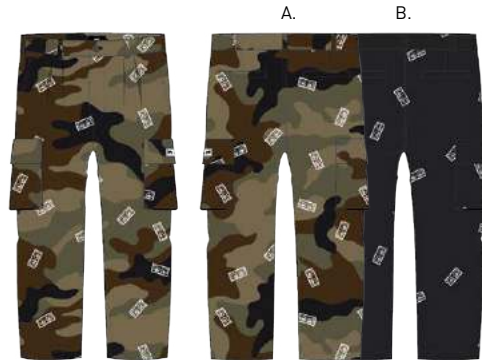


	COLOR	S	M	L	XL	XXL
A.	EYES FIELD CAMO					
B.	EYES BLACK MULTI					

FUBAR CARGO PANT

142020103

- Loose straight fit
- Military-inspired, oversized and pleated cargo pant with flooded inseam length. Features, zipper fly closure, slash front pockets, cargo pockets, and eyes logo label at cargo pocket
- 100% Cotton



	COLOR	28	30	31	32	33	34	36	38
A.	EYES FIELD CAMO								
B.	EYES BLACK MULTI								

NYLON GROUP



“LENSE” TRACK GROUP

LENSE JACKET

121800334

- Regular fit
- Tall mock neck, soft shell, raglan sleeve jacket with interior body lined with polar fleece. Elastic at cuffs and bottom waistband. Eyes label at front chest
- 100% Polyester



	COLOR	S	M	L	XL	XXL
A.	DRIP CAMO					
B.	BLACK					
C.	CHECKER					

EASY PANT II

142020112

- Relaxed fit
- Classic athletic pant with an elastic waistband and drawcord. Features a mesh lining, on-seam front pockets, single welt back pockets, elastic cuffs, and eyes logo label at back pocket
- 100% Polyester



	COLOR	XXS	XS	S	M	L	XL	XXL
A.	DRIP CAMO							
B.	BLACK							
C.	CHECKER							

“EASY” TRACK GROUP

EYES JACKET

121800350

- Regular fit
- A zip up front track jacket with welt pockets. Elastic at cuffs and waistband. Eyes woven label at front chest and Eyes logo taping along sleeves
- 100% Polyester



	COLOR	S	M	L	XL	XXL
A.	HOT RED					
B.	BLACK					
C.	DUSTY TEAL					

EYES PANT

142020120

- Relaxed fit
- Classic athletic pant with an elastic waistband and braided drawcord. Features on-seam front pockets, single welt back pockets, elastic cuffs, custom Eyes logo taping down sides of pant and woven label at back right pocket
- 100% Polyester



	COLOR	XXS	XS	S	M	L	XL	XXL
A.	HOT RED							
B.	BLACK							
C.	DUSTY TEAL							

KNIT GROUP



“BORSTAL” TRACK GROUP

BORSTAL TRACK JACKET

111620034

- Regular fit
- Zip up track jacket with solid rib trims. Features a tricot knit fabrication with front coil zipper, antique silver logo zipper pull, front welt pockets and logo direct embroidery
- 100% Polyester

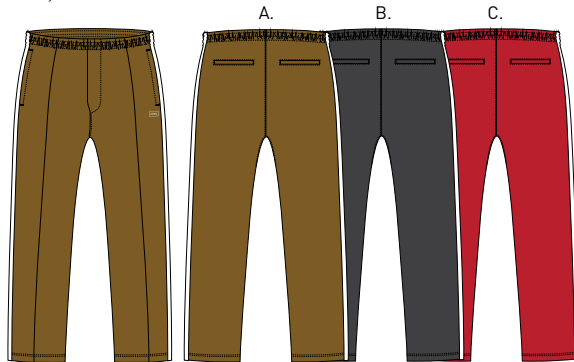


	COLOR	S	M	L	XL	XXL
A.	TAPENADE					
B.	BLACK					
C.	HOT RED					

BORSTAL TRACK PANT

142020109

- Regular fit
- Classic track pant with an elastic waistband and drawcord. Features on-seam front pockets, single welt back pockets, pintuck detail, contrast side stripes and logo embroidery at front left leg panel
- 100% Polyester



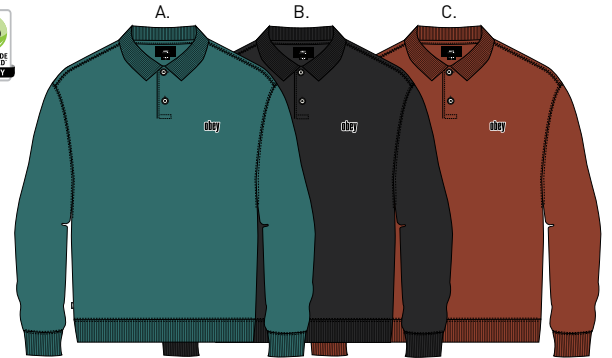
	COLOR	XXS	XS	S	M	L	XL	XXL
A.	TAPENADE							
B.	BLACK							
C.	HOT RED							

“SAUCER” VELOUR GROUP

SAUCER POLO

111620037

- Custom box fit
- Long sleeve polo fleece with rib collar and trims. Features a velour fabrication, logo buttons and logo embroidery at chest
- Fair trade factory certified
- 80% Cotton / 20% Polyester

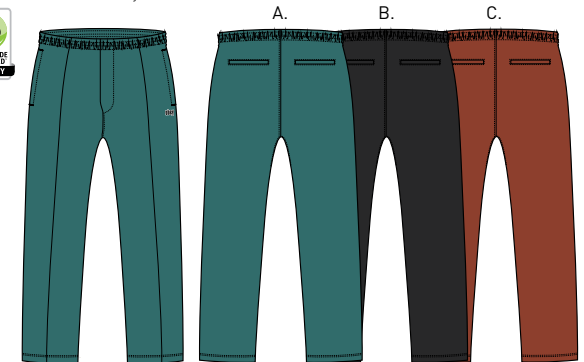


	COLOR	S	M	L	XL	XXL
A.	DUSTY TEAL					
B.	BLACK					
C.	PICANTE					

SAUCER PANT

142020124

- Regular fit
- Classic track pant with an elastic waistband and braided drawcord. Features on-seam front pockets, pintuck detail at front and embroidery at front left leg panel
- Fair trade factory certified
- 80% Cotton / 20% Polyester



	COLOR	XXS	XS	S	M	L	XL	XXL
A.	DUSTY TEAL							
B.	BLACK							
C.	PICANTE							

DENIM



142010050 BENDER 90'S DENIM

JUVEE
SKINNY FIT



- SITS BELOW WAIST
- SEAT AND THIGH
- SKINNY STRAIGHT LEG
- REGULAR & FLOODED INSEAM AVAILABLE
- STRETCH FABRICATION
- 13 1/2" LEG OPENING

SITS BELOW WAIST

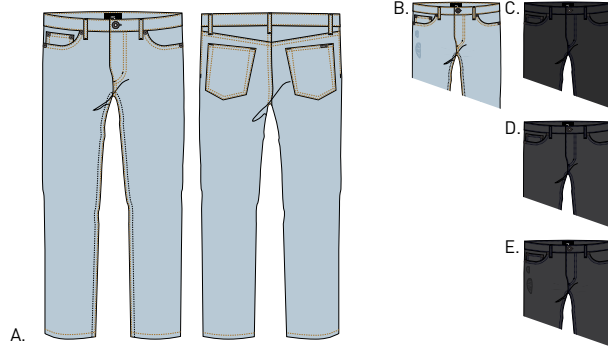
SKINNY STRAIGHT LEG

13 1/2" LEG OPENING

JUVEE DENIM II

142010055

- Skinny straight fit
- Classic skinny five-pocket denim pant. Features zipper fly and logo shank button closure, traditional front pockets with coin pocket, patch back pockets, and woven label at back right pocket
- 99% Cotton / 1% Spandex

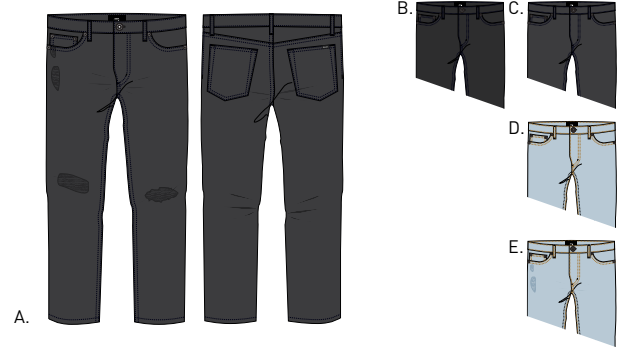


A.	COLOR	28	30	31	32	33	34	36	38
A.	LIGHT INDIGO								
B.	DESTROYED INDIGO								
C.	TRUE BLACK								
D.	FADED BLACK								
E.	DESTROYED BLACK								

JUVEE FLOODED DENIM II

142010056

- Skinny straight fit with flooded inseam length
- Classic skinny five pocket denim pant. Features zipper fly and logo shank button closure, traditional front pockets with coin pocket, patch back pockets, and woven label at back right pocket.
- 99% Cotton / 1% Spandex



A.	COLOR	28	30	31	32	33	34	36	38
A.	DESTROYED BLACK								
B.	FADED BLACK								
C.	TRUE BLACK								
D.	LIGHT INDIGO								
E.	DESTROYED INDIGO								

NEW THREAT
SLIM STRAIGHT FIT

- SITS BELOW WAIST
- SLIM SEAT AND THIGH
- SLIM STRAIGHT LEG
- REGULAR & FLOODED INSEAM AVAILABLE
- 14 1/2" LEG OPENING



SITS BELOW WAIST

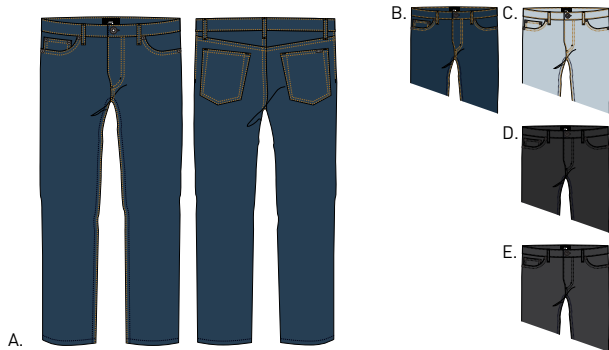
SLIM STRAIGHT LEG

14 1/2" LEG OPENING

NEW THREAT DENIM II

142010053

- Slim straight fit
- Classic slim five pocket denim pant. Features zipper fly and logo shank button closure, traditional front pockets with coin pocket, patch back pockets, and woven label at back right pocket
- 100% Cotton



	COLOR	28	30	31	32	33	34	36	38
A.	STONE WASH INDIGO								
B.	RAW INDIGO								
C.	LIGHT INDIGO								
D.	TRUE BLACK								
E.	DUSTY BLACK								

NEW THREAT CUT DENIM

142010054

- Slim straight fit with flooded inseam length
- Classic slim five pocket denim pant with raw cut hem. Features zipper fly and logo shank button closure, traditional front pockets with coin pocket, patch back pockets, and woven label at back right pocket
- 100% Cotton



	COLOR	28	30	31	32	33	34	36	38
A.	BLEACHED BLACK								

BENDER
STANDARD FIT



- SITS BELOW WAIST
- REGULAR SEAT AND THIGH
- SLIGHT TAPERED LEG
- REGULAR & FLOODED INSEAM AVAILABLE
- 15" LEG OPENING

SITS BELOW WAIST

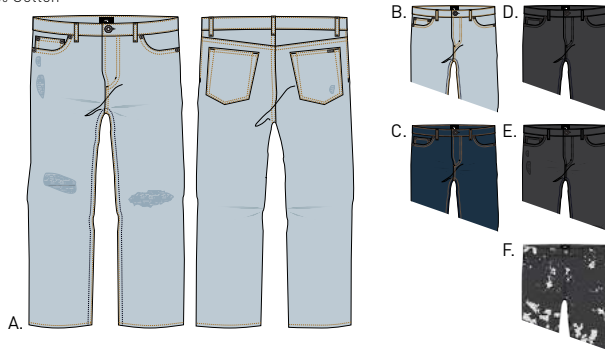
SLIGHT TAPER AT LEG

15" LEG OPENING

BENDER 90'S DENIM

142010050

- Standard fit with flooded inseam length
- Classic five pocket denim pant. Features zipper fly and logo shank button closure, traditional front pockets with coin pocket, patch back pockets, and woven label at back right pocket
- 100% Cotton



	COLOR	28	30	31	32	33	34	36	38
A.	DESTROYED INDIGO								
B.	LIGHT INDIGO								
C.	STONE WASHED INDIGO								
D.	DUSTY BLACK								
E.	DESTROYED BLACK								
F.	BLEACHED BLACK								

BENDER CARPENTER DENIM

142010060

- Standard fit with flooded inseam length
- Classic denim carpenter pant. Features zipper fly and logo shank button closure, slash front pockets with coin pocket, patch back pockets, carpenter pocket details and woven label at back right pocket
- 100% Cotton



	COLOR	28	30	31	32	33	34	36	38
A.	LIGHT INDIGO								
B.	DUSTY BLACK								

HARDWORK
CLASSIC FIT



- SITS AT WAIST
- CLASSIC SEAT AND THIGH
- CLASSIC STRAIGHT LEG
- REGULAR INSEAM
- 16.5" LEG OPENING

SITS AT WAIST

CLASSIC STRAIGHT LEG

16.5" LEG OPENING

HARDWORK DENIM

142010063

- Classic fit
- Classic five-pocket denim pant. Features zipper fly and logo shank button closure, traditional front pockets with coin pocket, patch back pockets, and woven label at back right pocket
- 100% Cotton



	COLOR	28	30	31	32	33	34	36	38
A.	TAPENADE								
B.	PINE								
C.	LIGHT INDIGO								
D.	DUSTY BLACK								

HARDWORK CARPENTER PANT

142020119

- Classic fit
- Classic carpenter pant. Features zipper fly and logo shank button closure, slash front pockets with coin pocket, patch back pockets, carpenter pocket details, and woven label at back right pocket
- 100% Cotton



	COLOR	28	30	31	32	33	34	36	38
A.	DARK TEAL								
B.	BLACK								
C.	PICANTE								
D.	TAPENADE								



DENIM FIT GUIDE

JUVEE DENIM

- SITS BELOW WAIST
- SLIM SEAT AND THIGH
- SKINNY STRAIGHT LEG
- REGULAR & FLOODED INSEAM AVAILABLE
- STRETCH FABRICATION
- 13 1/2" LEG OPENING

SKINNY FIT



NEW THREAT DENIM

- SITS BELOW WAIST
- SLIM SEAT AND THIGH
- SLIM STRAIGHT LEG
- REGULAR & FLOODED INSEAM AVAILABLE
- 14 1/2" LEG OPENING

SLIM STRAIGHT FIT



BENDER DENIM

- SITS BELOW WAIST
- REGULAR SEAT AND THIGH
- SLIGHT TAPERED LEG
- REGULAR & FLOODED INSEAM AVAILABLE
- 15" LEG OPENING

STANDARD FIT



DENIM FIT GUIDE

HARDWORK DENIM

- SITS AT WAIST
- CLASSIC SEAT AND THIGH
- CLASSIC STRAIGHT LEG
- REGULAR INSEAM
- 16.5" LEG OPENING

CLASSIC FIT



LEATHERS



121800239 BASTARDS PU JACKET

LEATHERS

CLIFTON LEOPARD JACKET

- Regular fit
- Soft suede zip up bomber jacket with soft ribbing at collar, cuffs and waistband. Welt pocket entry at bottom and smooth interior body lined with leopard print
- SHELL: 100% Leather; LINING: 100% Polyester



A.

B.



	COLOR	S	M	L	XL	XXL
A.	PINE					
B.	TAPENADE					

121800322

BASTARDS LEATHER JACKET

121800233

- Slim fit
- Soft leather motorcycle jacket with all silver hardware details and zip up pockets at chest, bottom front and bottom waist money belt. Interior body with OBEY logo debossing. Enamel pin at lapel
- SHELL: 100% Leather; LINING: 100% Acetate



A.

	COLOR	S	M	L	XL	XXL
A.	BLACK					

FAUX LEATHERS

BASTARDS PU JACKET

121800239

- Slim fit
- Soft faux leather motorcycle jacket with all silver hardware details and zip up pockets at chest, bottom front and bottom waist money belt. Interior body with soft contrast fabrication. Enamel pin at lapel
- SHELL: 100% Polyetherane; LINING: 100% Polyester



A.

	COLOR	S	M	L	XL	XXL
A.	BLACK					

JACKETS



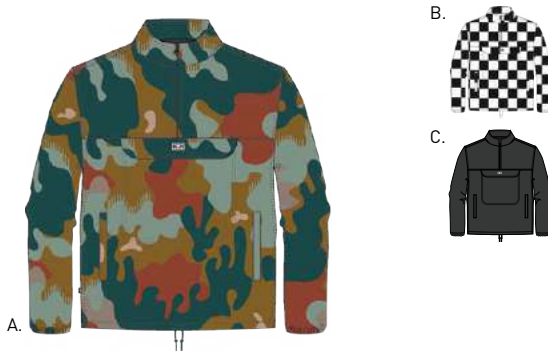
121800355 SOTO DIVISION JACKET

JACKETS

RUNAROUND EYES JACKET

121800333

- Regular fit
- Technical pullover anorak with mesh lining and large pouch pocket with side welt pockets at front. Zip front closure along with stowaway hood tucked under standing collar. Eyes label at front pouch pocket flap
- 100% Polyester

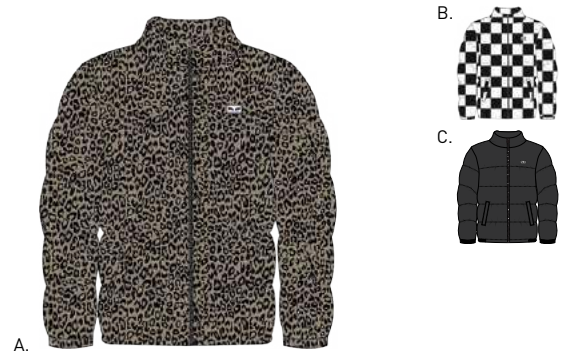


	COLOR	S	M	L	XL	XXL
A.	DRIP CAMO					
B.	CHECKER					
C.	BLACK					

BOUNCER PUFFER JACKET

121800336

- Regular fit
- Down alternative puffer jacket with stowaway hood tucked under standing collar. Elastic at cuffs and bottom waistband. Hidden zipper closure at bottom welt pockets. Eyes label at front chest
- 100% Polyester



	COLOR	S	M	L	XL	XXL
A.	KHAKI LEOPARD					
B.	CHECKER					
C.	BLACK					

CROSTOWN II ANORAK

121800337

- Regular fit
- Technical hooded pullover anorak with large zip pouch at front and side welt pockets. Waist ties at bottom hem and drawcords at hood to cinch. Removable velcro eyes patch at sleeve and logo screen print at front chest
- 100% Polyester



	COLOR	S	M	L	XL	XXL
A.	DUSTY TEAL					
B.	HOT RED					
C.	BLACK					

DERBY BOX PARKA

121800339

- Oversized fit
- A custom box fit parka jacket with interior quilted body. Stowaway hood tucked under standing collar. Large patch pockets at bottom front and removable velcro Eyes patch at front chest
- 100% Polyester



	COLOR	S	M	L	XL	XXL
A.	BLACK					
B.	DUSTY TEAL					

PACKING VEST

121810006

- Oversized fit
- A baggy fit zip up vest with large four patch pockets at front. Logo shank buttons at pocket flaps and pouch pocket with zipper closure at back. Logo embroidery at back side and eyes woven label at front pocket flap
- SHELL: 60% Cotton / 40% Polyester; LINING: 100% Polyester; FILLING: 100% Polyester



	COLOR	S	M	L	XL	XXL
A.	BLACK					
B.	PINE					

LOCK DOWN ANORAK

121800344

- Oversized fit
- A cotton poplin popover anorak with built in hood and large pockets at front chest. Side seam pocket entry. Zip closure at front and drawcord ties at bottom opening. Eyes woven label at chest pocket flap
- SHELL: 100% Cotton; LINING: 100% Polyester



	COLOR	S	M	L	XL	XXL
A.	DRIP CAMO					
B.	BLACK					

JACKETS

MORPHINE BOX PARKA

121800343

- Oversized custom box fit
- Parka jacket with interior quilted body. Built in hood with drawcord ties in hood, hidden at waist and bottom opening. Hidden snaps and zipper closure at center front. Eyes woven label at front chest
- SHELL: 100% Cotton; LINING: 100% Polyester; FILLING: 100% Polyester

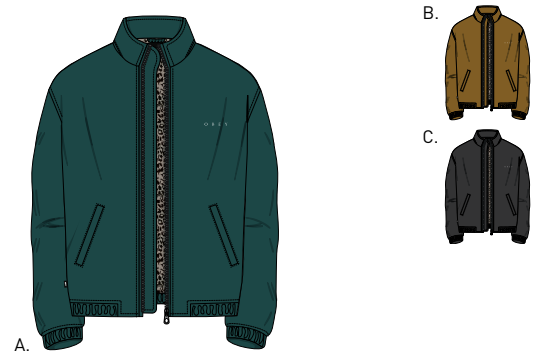


	COLOR	S	M	L	XL	XXL
A.	BLACK					
B.	DRIP CAMO					
C.	DARK TEAL					

DEBASER II JACKET

121800338

- Regular fit
- A zip up cropped golf jacket with hood and stowaway hood tucked under standing collar. Interior body is lined with smooth leopard print and logo screen print at front chest
- SHELL: 100% Cotton; LINING: 100% Polyester; FILLING: 100% Polyester



	COLOR	S	M	L	XL	XXL
A.	DARK TEAL					
B.	TAPENADE					
C.	BLACK					

OUTBOUND JACKET

121800342

- Regular fit
- A cotton poplin bomber jacket with soft interior body lining and quilting in contrast color. Soft rib at standing collar, cuff and waistband. Logo screen print at front chest
- SHELL: 100% Cotton; LINING: 100% Polyester; FILLING: 100% Polyester

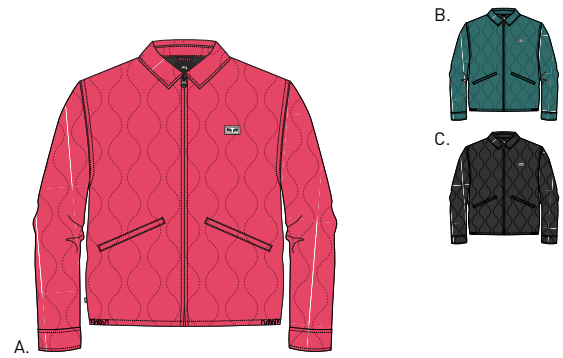


	COLOR	S	M	L	XL	XXL
A.	TIGER CAMO					
B.	BLACK					
C.	DRIP CAMO					

DROPOUT LINER JACKET

121800335

- Regular fit
- A slightly cropped gas station jacket with exaggerated pivoted welt pockets at bottom. Quilting on exterior side and quilted through interior side. Eyes label at front chest
- 100% Polyester



	COLOR	S	M	L	XL	XXL
A.	CORAL PINK					
B.	DUSTY TEAL					
C.	BLACK					

DILLINGER HOODED JACKET

121800346

- Regular fit
- A zip up cotton twill hooded trucker jacket with interior body lined with sherpa. Interior sleeves are diamond quilted and lightly insulated. Soft rib at cuffs and waistband. Logo embroidery at front chest
- SHELL: 100% Cotton; LINING: 100% Polyester

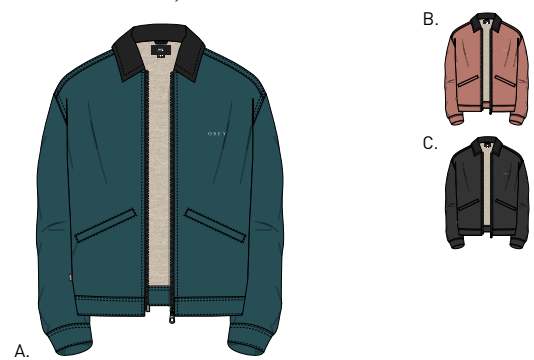


	COLOR	S	M	L	XL	XXL
A.	ROSE					
B.	PINE					
C.	BLACK					

DILLINGER TRUCKER JACKET

121800345

- Regular fit
- A zip up cotton twill trucker jacket with interior body lined with sherpa. Interior sleeve is diamond quilted and lightly insulated. Logo shank at back waist tab and cuff closure. Logo embroidery at front chest
- SHELL: 100% Cotton; LINING: 100% Polyester



	COLOR	S	M	L	XL	XXL
A.	PINE					
B.	ROSE					
C.	BLACK					

JACKETS

IGGY INSULATED JACKET

121800348

- Regular fit
- A twill M-65 military-inspired jacket with patch pockets at front. Zip away at standing collar for hood to roll out. Adjustable velcro closure at sleeve openings, hidden snaps and zipper at center front. Logo canvas taping above chest pocket
- SHELL: 60% Cotton / 40% Polyester; LINING: 100% Polyester; FILLING: 100% Polyester

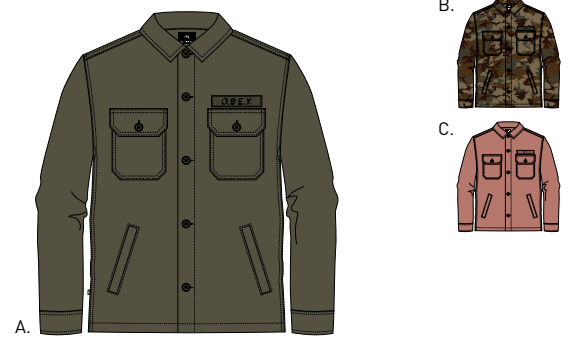


	COLOR	S	M	L	XL	XXL
A.	ROSE					
B.	BLACK					
C.	FIELD CAMO					

STATION SHIRT JACKET

121160013

- Regular fit
- Durable vintage CPO military - inspired shirt jacket in twill. Double chest pockets and bottom welt pockets at front. Canvas logo name tag directly sewn above chest pocket
- 60% Cotton / 40% Polyester

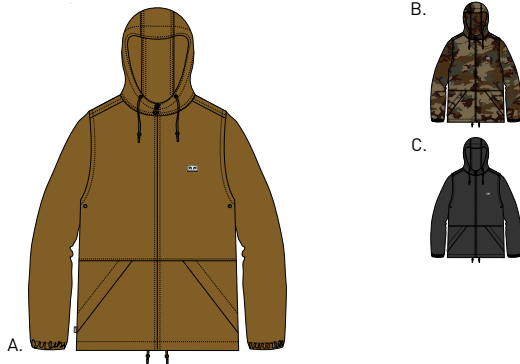


	COLOR	S	M	L	XL	XXL
A.	BURNT OLIVE					
B.	FIELD CAMO					
C.	ROSE					

RUSSET PARKA

121800349

- Regular fit
- A windbreaker zip up jacket with built in snorkel hood and drawcord to cinch. Hidden zipper closure at bottom welt pocket. Drawcord ties at bottom opening. Eyes woven label sewn at front chest
- SHELL: 60% Cotton / 40% Polyester; LINING: 100% Polyester



	COLOR	S	M	L	XL	XXL
A.	TAPENADE					
B.	FIELD CAMO					
C.	BLACK					

RISE UP BDU JACKET

121800341

- Regular fit
- A military cotton ripstop, BDU style jacket with hidden snap and zipper closure at center front. Four patch pockets at front with hidden button closure and Eyes woven label at chest pocket flap
- 100% Cotton



	COLOR	S	M	L	XL	XXL
A.	OVERSIZE CAMO					
B.	DRIP CAMO					

SINGFORD PARKA

121800340

- Regular fit
- A durable and heavily insulated hooded long stadium jacket with exposed snaps and hidden zipper at center front closure. Diamond quilted interior body in contrast color and logo screen print at front chest
- 100% Polyester



	COLOR	S	M	L	XL	XXL
A.	FIELD CAMO					
B.	BLACK					
C.	PINE					

JACKETS

SOTO DIVISION JACKET

121800355

- Regular fit
- An insulated wool blend bomber jacket. Interior body diamond quilted with contrast lining color. Gloss finish logo snap closure at front, and a soft flexible rib at collar, cuffs and waistband. Sophisticated logo embroidery at chest
- SHELL: 70% Polyester / 30% Wool; LINING: 100% Polyester; FILLING: 100% Polyester

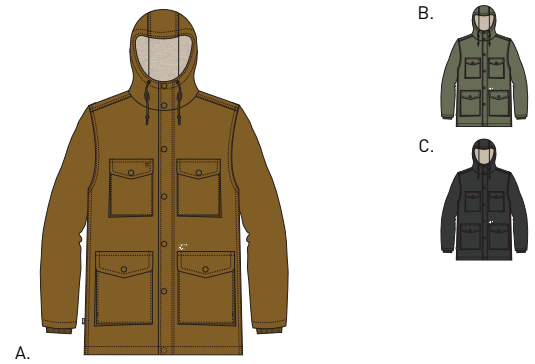


	COLOR	S	M	L	XL	XXL
A.	BLACK					
B.	FOREST					

HELLER II JACKET

121800287

- Regular fit
- A heavyweight parka with patch pockets at chest and bottom. Interior body lined with sherpa. Drawcords around hood to cinch and rib hidden under sleeve opening. Logo mil spec printed above bottom pocket
- SHELL: 100% Cotton; LINING & FILLING: 100% Polyester



	COLOR	S	M	L	XL	XXL
A.	TAPENADE					
B.	ARMY					
C.	BLACK					

Starecophonio

- FIDELITY



ecophonio

SWEATERS



151000041 ROEBLING SWEATER

SWEATERS

COURT SWEATER

15100040

- Regular fit
- Crew neck sweater. Features an acrylic like mohair yarn with OBEY Creeper embroidery at chest
- 100% Acrylic



A.

B.



	COLOR	S	M	L	XL	XXL
A.	HOT RED					
B.	BLACK					

COURT CARDIGAN II

15101013

- Regular fit
- Button front cardigan. Features an acrylic like mohair yarn with front pocket and OBEY creeper embroidery at chest
- 100% Acrylic



A.

B.



	COLOR	S	M	L	XL	XXL
A.	BLACK					
B.	DUSTY TEAL					

ROEBLING SWEATER

15100041

- Regular fit
- Wool blend crew neck sweater. Features an all over cable knit pattern with contrast stripes at chest and top sleeves
- 70% Acrylic / 30% Wool



A.

B.



	COLOR	S	M	L	XL	XXL
A.	DARK TEAL MULTI					
B.	BLACK MULTI					

SCORPION SWEATER

15100039

- Regular fit
- Cotton blend crew neck sweater with solid rib trims. Features an all over OBEY original Scorpion pattern
- 60% Cotton / 40% Polyester



A.

B.



	COLOR	S	M	L	XL	XXL
A.	PINE MULTI					
B.	BLACK MULTI					

WOVENS



181200243 DIRTY LEO WOVEN LS

WOVENS

KEBLE DENIM WOVEN LS

181200221

- Slim fit
- A proper button down collar shirt in denim with a thin contrast piping at underside of collarstand. Single chest pocket with button closure. Flag label at chest pocket and white pearlized buttons for closures
- 100% Cotton



A.

	COLOR	S	M	L	XL	XXL
A.	TAPENADE					
B.	BLUE					
C.	BLACK					

HESTER WOVEN SS

181210187

- Slim fit
- A stripe shirt with logo embroidery at front chest and white pearlized buttons for closures
- 100% Cotton



A.

	COLOR	S	M	L	XL	XXL
A.	HOT RED MULTI					
B.	BLUE MULTI					
C.	BLACK MULTI					

HESTER WOVEN LS

181200226

- Slim fit
- A stripe shirt with logo embroidery at front chest and white pearlized buttons for closures
- 100% Cotton



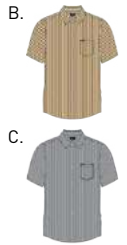
A.

	COLOR	S	M	L	XL	XXL
A.	BLUE MULTI					
B.	HOT RED MULTI					
C.	BLACK MULTI					

TOWNE WOVEN SS

181210185

- Slim fit
- A soft micro stripe shirt with single chest pocket and strip label at pocket opening. White pearlized buttons for closures
- 100% Cotton



A.

	COLOR	S	M	L	XL	XXL
A.	BLUE TEAL MULTI					
B.	TAPENADE MULTI					
C.	BLACK MULTI					

TOWNE WOVEN LS

181200223

- Slim fit
- A soft micro stripe shirt with single chest pocket and strip label at pocket opening. White pearlized buttons for closures
- 100% Cotton



A.

	COLOR	S	M	L	XL	XXL
A.	TAPENADE MULTI					
B.	BLUE TEAL MULTI					
C.	BLACK MULTI					

WICKER WOVEN SS

181210207

- Regular fit
- A wide stripe shirt with single chest pocket. Flag label at pocket and solid gloss black buttons for closures
- 100% Cotton



A.

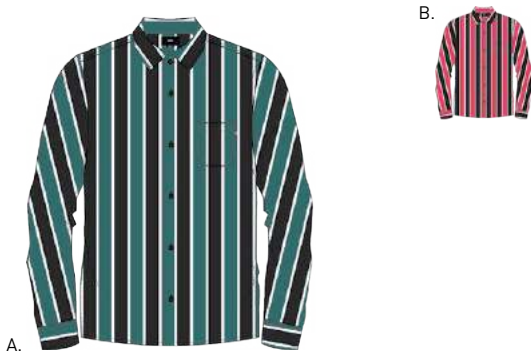
	COLOR	S	M	L	XL	XXL
A.	PINK MULTI					
B.	TEAL MULTI					

WOVENS

WICKER WOVEN LS

- Regular fit
- A wide stripe shirt with single chest pocket. Flag label at pocket and solid gloss black buttons for closures
- 100% Cotton

181200232



	COLOR	S	M	L	XL	XXL
A.	TEAL MULTI					
B.	PINK MULTI					

LOW END WOVEN SS

- Slim fit
- A proper button down collar stripe shirt. Single chest pocket with flag label and white pearlized buttons for closures
- 100% Cotton

181210208



	COLOR	S	M	L	XL	XXL
A.	DUSTY TEAL MULTI					
B.	BLACK MULTI					

LOW END WOVEN LS

- Slim fit
- A proper button down collar stripe shirt. Single chest pocket with flag label and white pearlized buttons for closures
- 100% Cotton

181200233



	COLOR	S	M	L	XL	XXL
A.	BLACK MULTI					
B.	DUSTY TEAL MULTI					

VENTURA WOVEN

- Regular fit
- A soft flannel plaid shirt. Single chest pocket with flag label and solid gloss black buttons for closures
- 100% Cotton

181200234

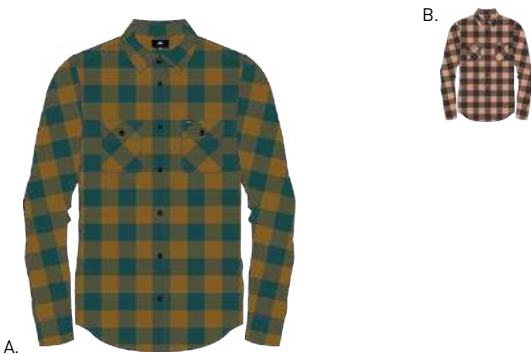


	COLOR	S	M	L	XL	XXL
A.	CORAL MULTI					
B.	TEAL MULTI					

VEDDER WOVEN

- Regular fit
- A soft flannel large plaid shirt. Double chest pockets and button down pocket flaps with strip label. Black gloss buttons for closures
- 100% Cotton

181200245



	COLOR	S	M	L	XL	XXL
A.	DARK TEAL MULTI					
B.	ROSE MULTI					

CONTINENTAL WOVEN

- Regular fit
- A soft flannel shirt in a shadow plaid. Double chest pockets and button down pocket flaps with strip label. White pearlized buttons for closures
- 100% Cotton

181200235



	COLOR	S	M	L	XL	XXL
A.	PINK MULTI					
B.	PINE MULTI					

WOVENS

NELSON WOVEN

181200236

- Regular fit
- A soft flannel shirt in bold plaid. Double chest pockets and button down pocket flaps with strip label. White pearlized buttons for closures
- 100% Cotton



	COLOR	S	M	L	XL	XXL
A.	BLACK MULTI					
B.	LIGHT SAGE MULTI					

OUTPOST WOVEN

181200237

- Regular fit long sleeve button up shirt
- A soft flannel shirt in solid color. Double chest pockets and button down pocket flaps with strip label. Black gloss buttons for closures
- 100% Cotton



	COLOR	S	M	L	XL	XXL
A.	PINE					
B.	ROSE					

HOMEBOUND WOVEN

181200238

- Regular fit
- A heavy flannel plaid shirt with side pocket entry. Double chest pockets and button down pocket flaps with strip label. White pearlized buttons for closures
- 100% Cotton



	COLOR	S	M	L	XL	XXL
A.	BLACK FOREST MULTI					
B.	CREAM MULTI					

SWINDLE WOVEN SS

181210209

- Slim fit
- All over Shattered Glass print shirt. Single chest pocket with strip label and white pearlized buttons for closures
- 100% Cotton



	COLOR	S	M	L	XL	XXL
A.	BLACK MULTI					
B.	ROSE MULTI					

SWINDLE WOVEN LS

181200239

- Slim fit
- All over Shattered Glass print shirt. Single chest pocket with strip label and white pearlized buttons for closures
- 100% Cotton

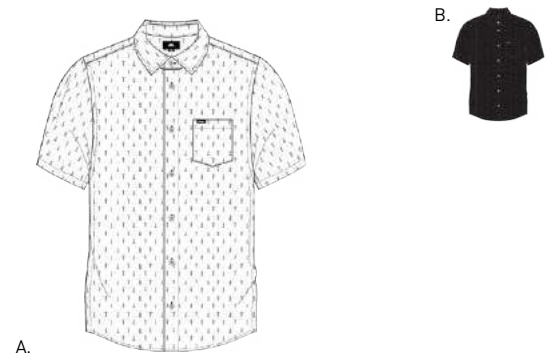


	COLOR	S	M	L	XL	XXL
A.	ROSE MULTI					
B.	BLACK MULTI					

SCREW WOVEN SS

181210211

- Slim fit
- All over Mini Screws print shirt. Single chest pocket with strip label and white pearlized buttons for closures
- 100% Cotton



	COLOR	S	M	L	XL	XXL
A.	WHITE MULTI					
B.	BLACK MULTI					

WOVENS

SCREW WOVEN LS

181200240

- Slim fit
- All over Mini Screws print shirt. Single chest pocket with strip label and white pearlized buttons for closures
- 100% Cotton



A.

	COLOR	S	M	L	XL	XXL
A.	BLACK MULTI					
B.	WHITE MULTI					

ROSIE WOVEN SS

181210212

- Slim fit
- All over Rose print shirt. Single chest pocket with strip label and white pearlized buttons for closures
- 100% Cotton



A.

	COLOR	S	M	L	XL	XXL
A.	WHITE MULTI					
B.	BLACK MULTI					

ROSIE WOVEN LS

181200241

- Slim fit
- All over Rose print shirt. Single chest pocket with strip label and white pearlized buttons for closures
- 100% Cotton



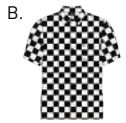
A.

	COLOR	S	M	L	XL	XXL
A.	BLACK MULTI					
B.	WHITE MULTI					

PROSPECT WOVEN SS

181210213

- Regular fit
- A checkered print rayon shirt. Single chest pocket with strip label and solid black gloss buttons for closures
- 100% Viscose



A.

	COLOR	S	M	L	XL	XXL
A.	PINE MULTI					
B.	WHITE MULTI					

PROSPECT WOVEN LS

181200242

- Regular fit
- A checkered print rayon shirt. Single chest pocket with strip label and solid black gloss buttons for closures
- 100% Viscose



A.

	COLOR	S	M	L	XL	XXL
A.	WHITE MULTI					
B.	PINE MULTI					

DIRTY LEO WOVEN SS

181210214

- Regular fit
- A leopard print rayon shirt. Single chest pocket with strip label and solid black gloss buttons for closures
- 100% Viscose



A.

	COLOR	S	M	L	XL	XXL
A.	KHAKI MULTI					
B.	TEAL MULTI					

WOVENS

DIRTY LEO WOVEN LS

- Regular fit
- A leopard print rayon shirt. Single chest pocket with strip label and solid black gloss buttons for closures
- 100% Viscose

181200243



	COLOR	S	M	L	XL	XXL
A.	TEAL MULTI					
B.	KHAKI MULTI					

THORN WOVEN SS

- Regular fit
- A satin shirt with rose embroidered at front chest pocket. Flag label at side of pocket and matching color pearlized buttons for closures
- 100% Polyester

181210227



	COLOR	S	M	L	XL	XXL
A.	BLACK					
B.	FADED YELLOW					

THORN WOVEN LS

- Regular fit
- A satin shirt with rose embroidered at front chest pocket. Flag label at side of pocket and matching color pearlized buttons for closures
- 100% Polyester

181200244



	COLOR	S	M	L	XL	XXL
A.	FADED YELLOW					
B.	BLACK					

CUSTOM FLEECE



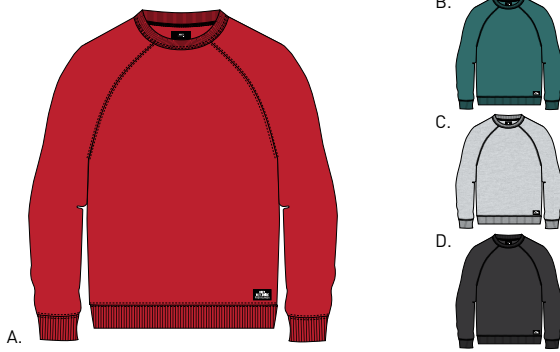
112480010 OBEY EYES HEAVY CREW

CUSTOM FLEECE

LOFTY CREATURE COMFORTS CREW II

111620025

- Slim fit
- Crew neck with raglan sleeves and solid rib trims. Features an extra soft fleece fabrication and a mil spec label above front rib
- 60% Cotton / 40% Polyester

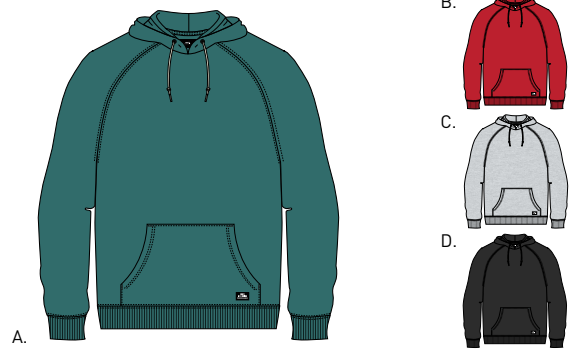


	COLOR	S	M	L	XL	XXL
A.	HOT RED					
B.	DUSTY TEAL					
C.	ATHLETIC HEATHER GREY					
D.	BLACK					

LOFTY CREATURE COMFORTS HOOD II

111620026

- Slim fit
- Hooded pullover with raglan sleeves and solid rib trims. Features an extra soft fleece fabrication and a mil spec label on pocket
- 60% Cotton / 40% Polyester

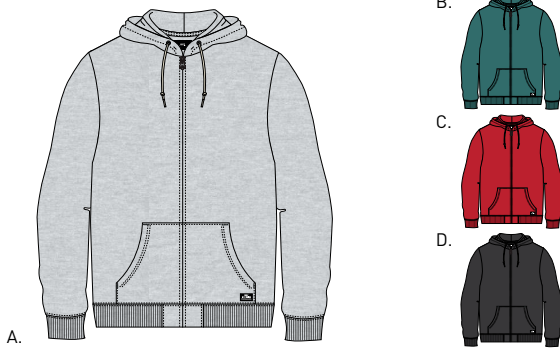


	COLOR	S	M	L	XL	XXL
A.	DUSTY TEAL					
B.	HOT RED					
C.	ATHLETIC HEATHER GREY					
D.	BLACK					

LOFTY COMFORTS ZIP HOOD

111620027

- Slim fit
- Zip up hooded pullover with solid rib trims. Features an extra soft fleece fabrication with hidden front zipper and front pocket and a mil spec label on pocket
- 60% Cotton / 40% Polyester

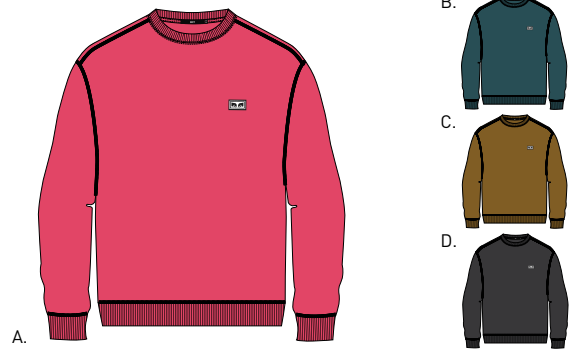


	COLOR	S	M	L	XL	XXL
A.	ATHLETIC HEATHER GREY					
B.	DUSTY TEAL					
C.	HOT RED					
D.	BLACK					

ALL EYEZ CREW

112480022

- Custom box fit
- Fleece crew neck with solid rib trims. Features a fleece fabrication and an eyes logo label at chest
- Fair trade factory certified
- 84% Cotton / 16% Polyester

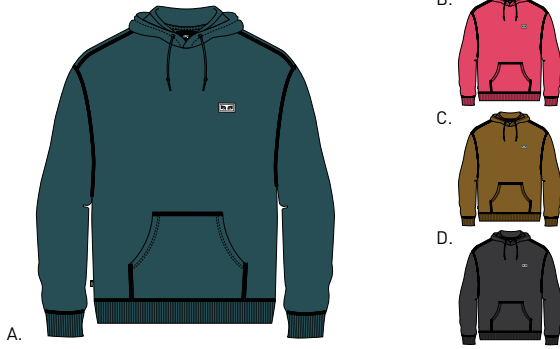


	COLOR	S	M	L	XL	XXL
A.	CORAL PINK					
B.	PINE					
C.	TAPENADE					
D.	BLACK					

ALL EYEZ HOOD

112470017

- Custom box fit
- Hooded fleece pullover with front pocket and solid rib trims. Features a fleece fabrication and an eyes logo label at chest
- Fair trade factory certified
- 84% Cotton / 16% Polyester

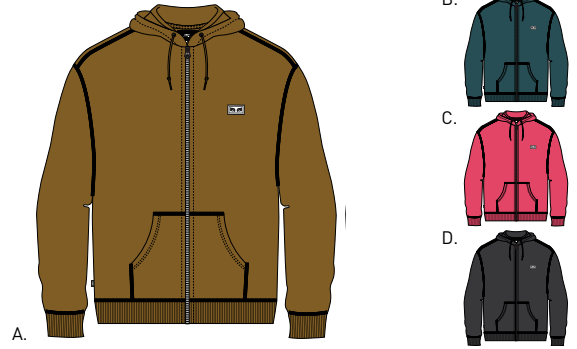


	COLOR	S	M	L	XL	XXL
A.	PINE					
B.	CORAL PINK					
C.	TAPENADE					
D.	BLACK					

ALL EYEZ ZIP HOOD

112460002

- Custom box fit
- Hooded fleece pullover with front pocket and solid rib trims. Features a fleece fabrication with exposed nickel zipper and an eyes logo label at chest
- Fair trade factory certified
- 84% Cotton / 16% Polyester



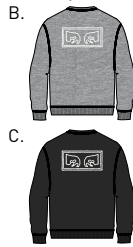
	COLOR	S	M	L	XL	XXL
A.	TAPENADE					
B.	PINE					
C.	CORAL PINK					
D.	BLACK					

CUSTOM FLEECE

OBEY EYES HEAVY CREW

112480010

- Custom box fit
- Crew neck fleece pullover with solid rib trims. Features a heavyweight fleece fabrication with OBEY eyes embroidery at chest and back
- Fair trade factory certified
- Solid : 84% Cotton / 16% Polyester; Athletic Heather Grey : 74% Cotton / 26% Polyester

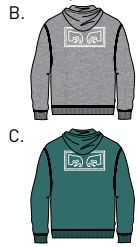


	COLOR	S	M	L	XL	XXL
A.	DUSTY TEAL					
B.	ATHLETIC HEATHER GREY					
C.	BLACK					

OBEY EYES HEAVY HOOD

112470007

- Custom box fit
- Hooded fleece pullover with front pocket and solid rib trims. Features a heavyweight fleece fabrication with OBEY original embroidery at chest and back
- Fair trade factory certified
- Solid : 84% Cotton / 16% Polyester; Athletic Heather Grey : 74% Cotton / 26% Polyester



	COLOR	S	M	L	XL	XXL
A.	BLACK					
B.	ATHLETIC HEATHER GREY					
C.	DUSTY TEAL					

ANYWAY HOOD

112470011

- Custom box fit
- Hooded fleece pullover with front pocket and solid rib trims. Features a fleece fabrication with brass hardware and OBEY logo screen print at chest
- Fair trade factory certified
- 84% Cotton / 16% Polyester



	COLOR	S	M	L	XL	XXL
A.	GOLDEN OLIVE					
B.	DARK TEAL					
C.	HOT RED					
D.	BLACK					

PANIC HOOD

112470032

- Custom box fit
- Hooded fleece pullover with front pocket and solid rib trims. Features a fleece fabrication with contrast OBEY logo embroidery
- Fair trade factory certified
- 84% Cotton / 16% Polyester



	COLOR	S	M	L	XL	XXL
A.	TAUPE					
B.	TEAL					
C.	BLACK					

REASON ANORAK HOOD

112470035

- Custom box fit
- Hooded fleece pullover with front zip placket, pocket and solid rib trims. Features a fleece fabrication with contrast OBEY logo embroidery
- Fair trade factory certified
- 84% Cotton / 16% Polyester

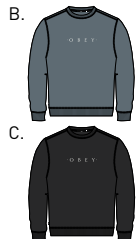


	COLOR	S	M	L	XL	XXL
A.	DRIP CAMO					
B.	FIELD CAMO					
C.	BLACK					

NOUVELLE CREW

112480029

- Custom box fit
- Fleece crew neck with solid rib trims. Features a fleece fabrication and OBEY logo embroidery at chest
- Fair trade factory certified
- 84% Cotton / 16% Polyester



	COLOR	S	M	L	XL	XXL
A.	PICANTE					
B.	GREY BLUE					
C.	BLACK					

CUSTOM FLEECE

NOUVELLE HOOD

- Custom box fit
- Hooded fleece pullover with front pocket and solid rib trims. Features a fleece fabrication and OBEY logo embroidery at chest
- Fair trade factory certified
- 84% Cotton / 16% Polyester



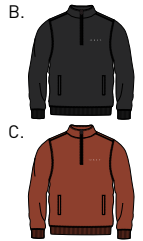
A.

	COLOR	S	M	L	XL	XXL
A.	BLACK					
B.	GREY BLUE					
C.	PICANTE					

112470026

NOUVELLE MOCK NECK ZIP

- Custom box fit
- Zip front mock neck fleece with front pockets. Features a fleece fabrication with non-exposed zipper placket and OBEY original embroidery at chest
- Fair trade factory certified
- 84% Cotton / 16% Polyester



A.

	COLOR	S	M	L	XL	XXL
A.	GREY BLUE					
B.	BLACK					
C.	PICANTE					

111620042

GAZE MOCK NECK ZIP

- Custom box fit
- Zip front mock neck fleece with front pockets. Features a fleece fabrication with non-exposed zipper placket and OBEY logo embroidery at chest
- Fair trade factory certified
- 84% Cotton / 16% Polyester



A.

	COLOR	S	M	L	XL	XXL
A.	LIGHT SAGE					
B.	TAUPE					
C.	BLACK					

111620044

CONSTRUCT HOOD

- Custom box fit
- Hooded fleece pullover with front pocket and solid rib trims. Features a fleece fabrication with tonal OBEY logo embroidery
- Fair trade factory certified
- 84% Cotton / 16% Polyester



A.

	COLOR	S	M	L	XL	XXL
A.	DUSTY CORAL					
B.	DUSTY TEAL					
C.	BLACK					

112470028

SAUCER CREW

- Custom box fit
- Crew neck with solid rib trims. Features a velour fabrication and OBEY logo embroidery at chest
- Fair trade factory certified
- 80% Cotton / 20% Polyester



A.

	COLOR	S	M	L	XL	XXL
A.	DUSTY TEAL					
B.	PICANTE					
C.	BLACK					

112480030

MOUNTAIN MOCK NECK ZIP

- Custom box fit
- Zip front mock neck polar fleece with front pockets. Features non-exposed zipper placket and OBEY logo embroidery at chest
- 100% Polyester



A.

	COLOR	S	M	L	XL	XXL
A.	TAPENADE					
B.	DARK TEAL					
C.	BLACK					

111620039

CUSTOM FLEECE

CUPID CREW POLO

- Custom box fit
- Long sleeve polo fleece with rib collar and trims. Features a fleece fabrication, screen print across chest, sleeve and back and logo embroidery at chest
- Fair trade factory certified
- 84% Cotton / 16% Polyester



A.

B.



112480035

THORNS CREW

- Custom box fit
- Fleece crew neck with solid rib trims. Features a fleece fabrication and OBEY rose all over print
- Fair trade factory certified
- Black : 84% Cotton / 16% Polyester; Heather Grey : 74% Cotton / 26% Polyester



A.

B.



112480032

	COLOR	S	M	L	XL	XXL
A.	DARK TEAL MULTI					
B.	TAPENADE MULTI					

	COLOR	S	M	L	XL	XXL
A.	BLACK MULTI					
B.	ATHLETIC HEATHER GREY MULTI					



KNITS



131080224 BORSTAL TEE SS

KNITS

APEX TEE SS

- Regular fit
- Short sleeve crew neck tee with solid rib trims. Features a multicolor yarn-dyed stripe jersey fabrication and OBEY screen print logo at chest
- Fair trade factory certified
- 100% Cotton



A.



B.

C.

COLOR S M L XL XXL

	COLOR	S	M	L	XL	XXL
A.	LILAC MULTI					
B.	TAPENADE MULTI					
C.	BLACK MULTI					

131080182

APEX TEE LS

- Regular fit
- Long sleeve crew neck tee with solid rib trims. Features a multicolor yarn-dyed stripe jersey fabrication and OBEY screen print logo at chest
- Fair trade factory certified
- 100% Cotton



A.



B.

C.

COLOR S M L XL XXL

	COLOR	S	M	L	XL	XXL
A.	TAPENADE MULTI					
B.	LILAC MULTI					
C.	BLACK MULTI					

131030068

WISEMAKER POCKET TEE

- Regular fit
- Short sleeve crew neck tee with chest pocket and solid rib trims. Features a multicolor yarn-dyed stripe jersey fabrication and solid neckband
- Fair trade factory certified
- 100% Cotton



A.



B.

C.

COLOR S M L XL XXL

	COLOR	S	M	L	XL	XXL
A.	PINE MULTI					
B.	NAVY MULTI					
C.	ARMY MULTI					

131080072

BURN CLASSIC TEE SS

- Custom box fit
- Short sleeve crew neck tee with solid rib trims. Features a heavyweight carded stripe jersey fabrication, solid contrast neckband and embroidery at chest
- Fair trade factory certified
- 100% Cotton



A.



B.

COLOR S M L XL XXL

	COLOR	S	M	L	XL	XXL
A.	PICANTE MULTI					
B.	DARK DENIM MULTI					

131080233

WATERFALL CLASSIC TEE LS

- Custom box fit
- Long sleeve crew neck tee with solid rib trims. Features a heavyweight carded stripe jersey fabrication, OBEY original patch at chest
- Fair trade factory certified
- 100% Cotton



A.



B.

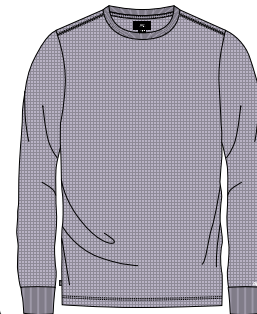
COLOR S M L XL XXL

	COLOR	S	M	L	XL	XXL
A.	DARK TEAL MULTI					
B.	PICANTE MULTI					

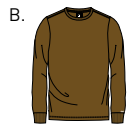
131030085

NORMAL TEE LS

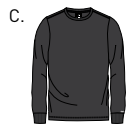
- Regular fit
- Long sleeve crew neck tee with solid rib trims. Features a loose knit textured fabrication and OBEY contrast screen print logo at sleeve
- Fair trade factory certified
- 100% Cotton



A.



B.



C.

COLOR S M L XL XXL

	COLOR	S	M	L	XL	XXL
A.	LILAC					
B.	TAPENADE					
C.	PIRATE BLACK					

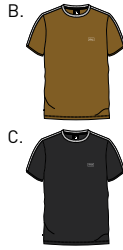
131030069

KNITS

BORSTAL TEE SS

131080224

- Regular fit
- Short sleeve crew neck tee with solid rib trims. Features a heavyweight carded jersey fabrication, contrast band down the sleeves and embroidery at chest
- Fair trade factory certified
- 100% Cotton



A.

	COLOR	S	M	L	XL	XXL
A.	HOT RED					
B.	TAPENADE					
C.	BLACK					

BORSTAL TEE LS

131030076

- Regular fit
- Long sleeve crew neck tee with solid rib trims. Features a heavyweight carded jersey fabrication, contrast band down the sleeves and embroidery at chest
- Fair trade factory certified
- 100% Cotton



A.

	COLOR	S	M	L	XL	XXL
A.	TAPENADE					
B.	HOT RED					
C.	BLACK					

TONE POLO SS

131090040

- Custom box fit
- Short sleeve polo with rib collar and cuffs. Features a pique fabrication, exposed zipper placket and OBEY logo embroidery at chest
- Fair trade factory certified
- 100% Cotton



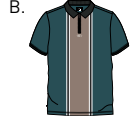
A.

	COLOR	S	M	L	XL	XXL
A.	PINE					
B.	BLACK					

STORM POLO SS

131090041

- Regular fit
- Short sleeve polo with solid rib trims. Features a pique vertical yarn-dyed fabrication, hidden zipper placket and OBEY logo embroidery at chest
- Fair trade factory certified
- 100% Cotton



A.

	COLOR	S	M	L	XL	XXL
A.	MOLE MULTI					
B.	PINE MULTI					

HERO CLASSIC POLO LS

131040013

- Custom box fit
- Long sleeve polo with contrast twill collar and tonal rib cuffs. Features a heavyweight jersey fabrication, OBEY logo buttons at placket, screen print and logo embroidery
- Fair trade factory certified
- 100% Cotton



A.

	COLOR	S	M	L	XL	XXL
A.	DULL OCHRE					
B.	DARK TEAL					
C.	BLACK					

PEARL CLASSIC MOCK ZIP LS

131030082

- Custom box fit
- Long sleeve mock neck zip tee with contrast band down sleeve and tonal rib cuffs. Features a heavyweight jersey fabrication, hidden zipper placket and contrast embroidery
- Fair trade factory certified
- 100% Cotton



A.

	COLOR	S	M	L	XL	XXL
A.	PICANTE / YELLOW					
B.	LEGION BLUE / KHAKI					

KNITS

GIMME CLASSIC POLO LS

131040016

- Custom box fit
- Long sleeve zip polo with contrast collar. Features a heavyweight leopard print jersey fabrication, exposed zipper placket and embroidery logo at chest
- Fair trade factory certified
- 100% Cotton



A.

	COLOR	S	M	L	XL	XXL
A.	TEAL LEOPARD					
B.	KHAKI LEOPARD					

ALL EYEZ POLO SS

131090034

- Regular fit
- Short sleeve polo with rib trims. Features a pique fabrication, OBEY logo buttons at placket and OBEY label at chest pocket
- Fair trade factory certified
- 100% Cotton



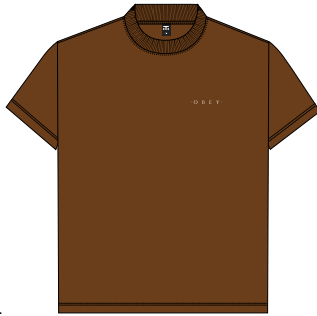
A.

	COLOR	S	M	L	XL	XXL
A.	LILAC					
B.	TAPENADE					
C.	BLACK					

NOVEL OBEY MOCK NECK SS

167151578

- Custom classic box fit
- Short sleeve jersey mock neck tee with solid rib trims. Features a heavyweight carded jersey fabrication, OBEY original screen print at chest
- Made in USA
- 100% Cotton



A.

	COLOR	S	M	L	XL	XXL
A.	LT. BROWN					
B.	ATLANTIC GREEN					
C.	OFF BLACK					

NOVEL OBEY MOCK NECK LS

167161578

- Custom classic box fit
- Long sleeve jersey mock neck tee with solid rib trims. Features a heavyweight carded jersey fabrication, OBEY original screen print at chest
- Made in USA
- 100% Cotton



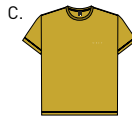
A.

	COLOR	S	M	L	XL	XXL
A.	ATLANTIC GREEN					
B.	LT. BROWN					
C.	OFF BLACK					

NOVEL OBEY 3 HEAVYWEIGHT CLASSIC CUSTOM TEE

166911838

- Custom classic box fit
- Short sleeve jersey tee with solid rib trims. Features a heavyweight carded jersey fabrication, OBEY original screen print at chest
- Made in USA
- 100% Cotton



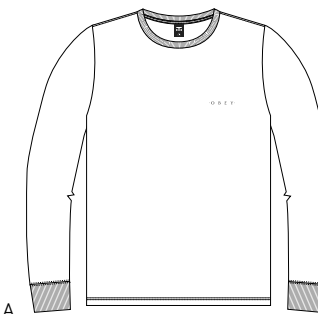
A.

	COLOR	S	M	L	XL	XXL
A.	OFF BLACK					
B.	FOREST PINE					
C.	SPECTRA YELLOW					
D.	WHITE					

NOVEL OBEY 3 HEAVYWEIGHT BOX LS

167101838

- Custom classic box fit
- Long sleeve jersey tee with solid rib trims. Features a heavyweight carded jersey fabrication, OBEY original screen print at chest
- Made in USA
- 100% Cotton



A.

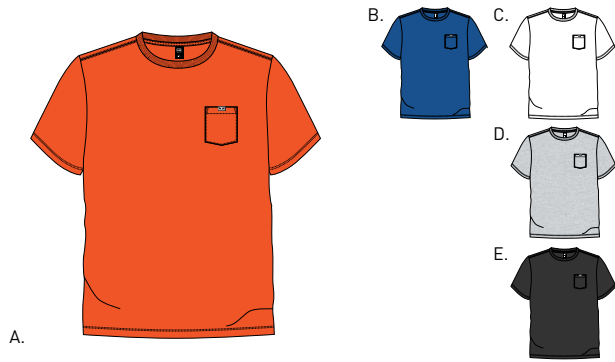
	COLOR	S	M	L	XL	XXL
A.	WHITE					
B.	FOREST PINE					
C.	SPECTRA YELLOW					
D.	OFF BLACK					

KNITS

ALL EYEZ TEE SS

131080225

- Regular fit
- Short sleeve crew neck tee with solid rib trims. Features a solid jersey fabrication with a chest pocket and an eyes logo clip label
- Solid : 100% Cotton; Heather Grey 90% Cotton / 10% Polyester

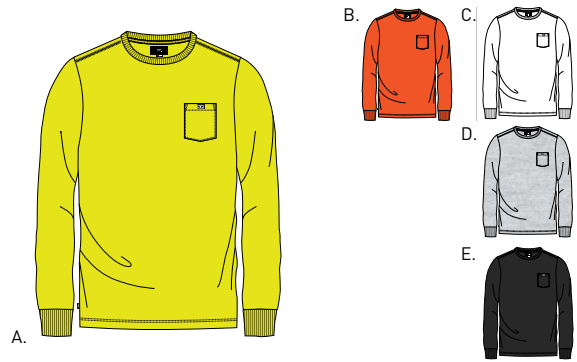


	COLOR	S	M	L	XL	XXL
A.	ORANGE					
B.	BLUE					
C.	WHITE					
D.	HEATHER GREY					
E.	BLACK					

ALL EYEZ TEE LS

131030077

- Regular fit
- Short sleeve crew neck tee with solid rib trims. Features a solid jersey fabrication with a chest pocket and an eyes logo clip label
- Solid : 100% Cotton; Heather Grey 90% Cotton / 10% Polyester

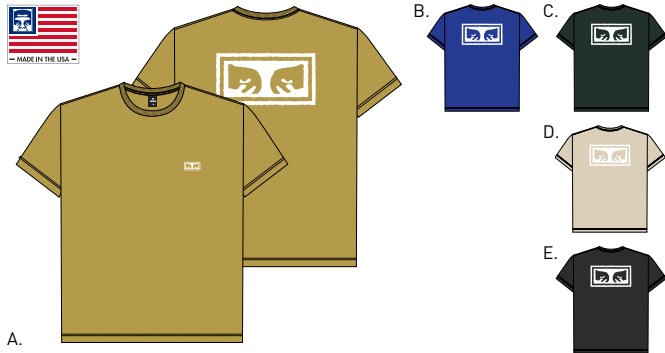


	COLOR	S	M	L	XL	XXL
A.	SAFETY GREEN					
B.	ORANGE					
C.	WHITE					
D.	HEATHER GREY					
E.	BLACK					

OBEY EYES 3 HEAVYWEIGHT BOX TEE

166911826

- Custom classic box fit
- Short sleeve jersey tee with solid rib trims. Features a heavyweight carded jersey fabrication, OBEY original screen print at chest and back
- Made in USA
- 100% Cotton

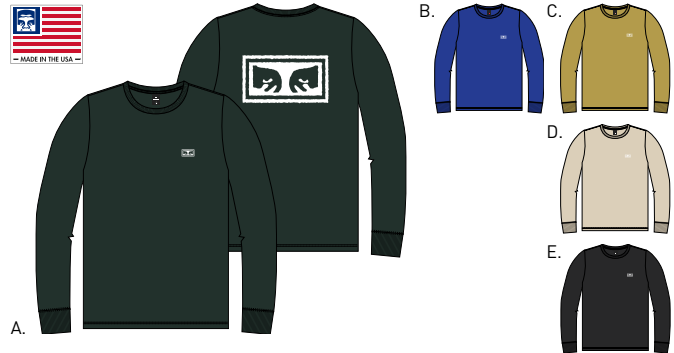


	COLOR	S	M	L	XL	XXL
A.	DIJON					
B.	ROYAL BLUE					
C.	FOREST PINE					
D.	CREAM					
E.	OFF BLACK					

OBEY EYES 3 HEAVYWEIGHT BOX LS

167101826

- Custom classic box fit
- Long sleeve jersey tee with solid rib trims. Features a heavyweight carded jersey fabrication, OBEY original screen print at chest and back
- Made in USA
- 100% Cotton

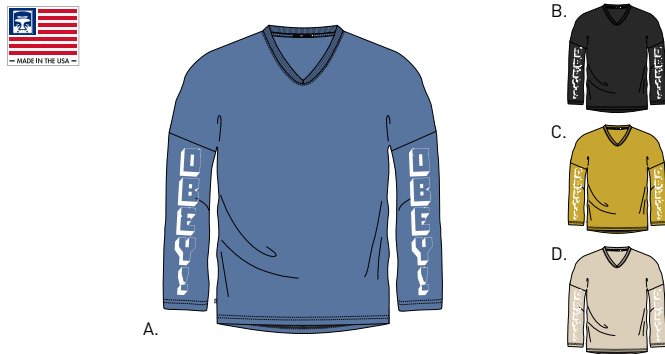


	COLOR	S	M	L	XL	XXL
A.	FOREST PINE					
B.	ROYAL BLUE					
C.	DIJON					
D.	CREAM					
E.	OFF BLACK					

OBEY NEW WORLD 2 HOCKEY JERSEY

136881696

- Custom classic box fit
- Long sleeve hockey jersey tee with solid rib trims. Features a heavyweight carded jersey fabrication, OBEY original screen print along sleeves
- Made in USA
- 100% Cotton

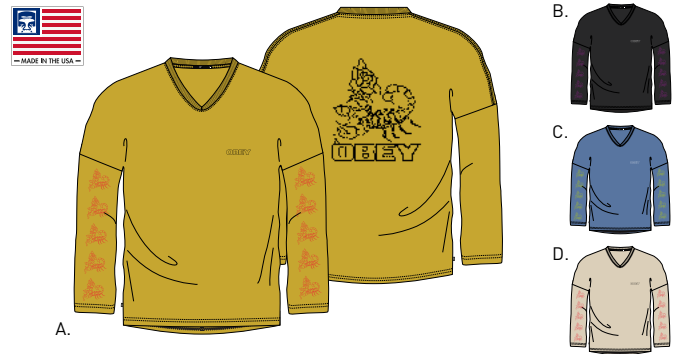


	COLOR	S	M	L	XL	XXL
A.	BLUE MOON					
B.	OFF BLACK					
C.	SPECTRA YELLOW					
D.	CREAM					

SCORPION ROSE HEAVYWEIGHT HOCKEY JERSEY

136881809

- Custom classic box fit
- Long sleeve hockey jersey tee with solid rib trims. Features a heavyweight carded jersey fabrication, OBEY original screen prints at chest, back and along sleeves
- Made in USA
- 100% Cotton



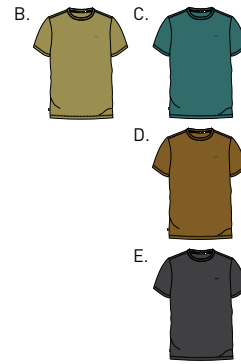
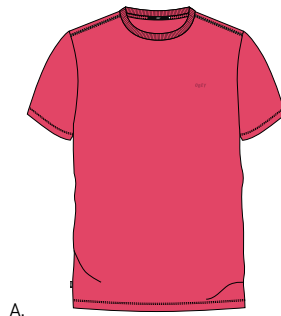
	COLOR	S	M	L	XL	XXL
A.	SPECTRA YELLOW					
B.	OFF BLACK					
C.	BLUE MOON					
D.	CREAM					

KNITS

JUMBLE PIGMENT TEE SS

131080186

- Regular fit
- Short sleeve crew neck tee with solid rib trims. Features a pigment-dyed jersey fabrication and tonal embroidery at chest
- 100% Cotton



	COLOR	S	M	L	XL	XXL
A.	DUSTY HOT PINK					
B.	DUSTY WILLOW					
C.	DUSTY AQUA					
D.	DUSTY TAPENADE					
E.	BLACK					

PANTS



142020123 STRAGGLER PLAID CARPENTER PANT

STRAGGLER
SLIM FIT



- SITS BELOW WAIST
- SLIM SEAT AND THIGH
- SLIGHT TAPERED LEG
- FLOODED INSEAM
- 15" LEG OPENING

SITS BELOW WAIST

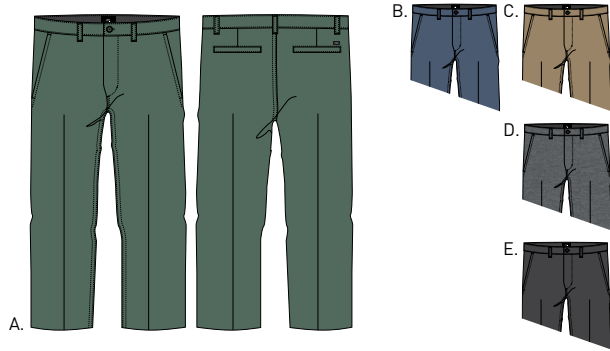
SLIGHT TAPER AT LEG

15" LEG OPENING

STRAGGLER FLOODED PANT

142020113

- Slim straight fit with flooded inseam length
- Timeless work pant. Features zipper fly closure, slash front pockets, single welt back pockets, and woven label at back right pocket
- 60% Cotton / 39% Polyester / 1% Spandex

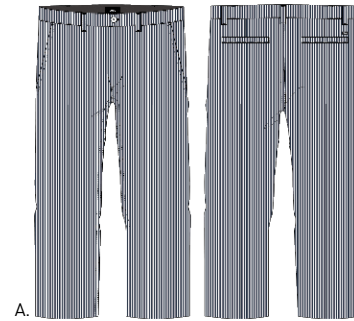


	COLOR	26	28	30	31	32	33	34	36	38
A.	DUSTY GREEN									
B.	DULL BLUE									
C.	KHAKI									
D.	HEATHER GREY									
E.	BLACK									

STRAGGLER STRIPE FLOODED PANT

142020115

- Slim straight fit with flooded inseam length
- Timeless work pant. Features zipper fly closure, slash front pockets, single welt back pockets, and woven label at back right pocket.
- 60% Cotton / 39% Polyester / 1% Spandex



	COLOR	26	28	30	31	32	33	34	36	38
A.	NAVY MULTI									

STRAGGLER HOUNDSTOOTH FLOODED PANT

142020114

- Slim straight fit with flooded inseam length
- Timeless work pant. Features zipper fly closure, slash front pockets, single welt back pockets, and woven label at back right pocket
- 60% Cotton / 39% Polyester / 1% Spandex



	COLOR	26	28	30	31	32	33	34	36	38
A.	KHAKI MULTI									
B.	WHITE MULTI									

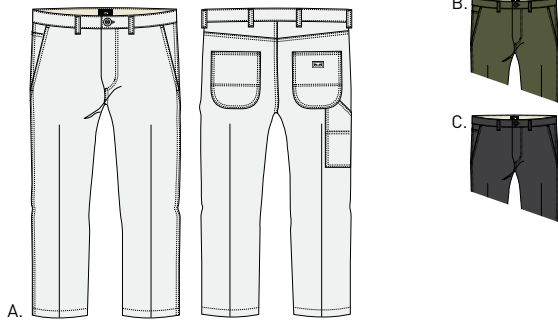
STRAGGLER CARPENTER SLIM FIT



STRAGGLER CARPENTER PANT III

142020116

- Slim straight fit with flooded inseam length
- Classic carpenter pant. Features zipper fly and logo shank button closure, slash front pockets with coin pocket, patch back pockets, carpenter pocket details and woven label at back right pocket
- 100% Cotton



	COLOR	26	28	30	31	32	33	34	36	38
A.	WHITE									
B.	ARMY									
C.	BLACK									

STRAGGLER PLAID CARPENTER PANT

142020123

- Slim straight fit with flooded inseam length
- Classic carpenter pant. Features zipper fly and logo shank button closure, slash front pockets with coin pocket, patch back pockets, carpenter pocket details and woven label at back right pocket
- 60% Cotton / 40% Polyester



	COLOR	26	28	30	31	32	33	34	36	38
A.	BLACK MULTI									

RECON
STANDARD FIT



RECON CARGO PANT

142020097

- Slim straight fit
- Classic military-inspired cargo pant. Features adjustable waistband pull tabs, zipper fly closure, slash front pockets, single welt back pockets with flaps, cargo pockets, and logo mil spec screenprint at right cargo pocket
- 100% Cotton



COLOR	28	30	31	32	33	34	36	38
A. TIGER CAMO								
B. FIELD CAMO								
C. BLACK								
D. ARMY								

TRAVELER
RELAXED FIT

- SITS BELOW WAIST
- RELAXED SEAT AND THIGH
- SLIGHT TAPERED LEG
- REGULAR INSEAM
- 14 1/2" LEG OPENING



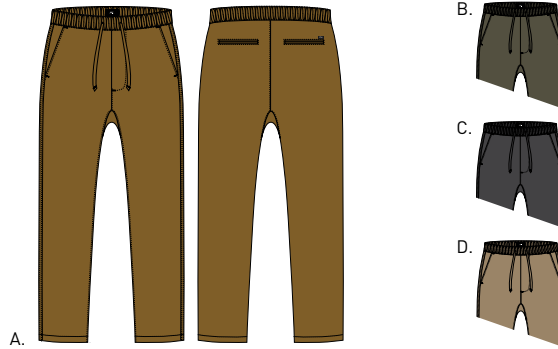
RELAXED TAPERED LEG

14 1/2" LEG OPENING

TRAVELER SLUB TWILL PANT II

142020087

- Relaxed fit
- Timeless utility pant with elastic waistband and woven drawcord. Features slash front pockets, double welt back pockets, functional crotch gusset, and woven label at back right pocket
- 100% Cotton



	COLOR	S	M	L	XL	XXL
A.	TAPENADE					
B.	ARMY					
C.	BLACK					
D.	KHAKI					



PANTS FIT GUIDE

STRAGGLER PANT

- SITS BELOW WAIST
- SLIM SEAT AND THIGH
- SLIGHT TAPERED LEG
- FLOODED INSEAM
- 15" LEG OPENING

SLIM FIT



STRAGGLER CARPENTER PANT

- SITS BELOW WAIST
- SLIM SEAT AND THIGH
- SLIGHT TAPERED LEG
- FLOODED INSEAM
- 15" LEG OPENING

SLIM FIT



HARD WORK PANT

- SITS AT WAIST
- CLASSIC SEAT AND THIGH
- CLASSIC STRAIGHT LEG
- REGULAR INSEAM
- 16.5" LEG OPENING

CLASSIC FIT



PANTS FIT GUIDE

RECON PANT

- SITS AT WAIST
- REGULAR SEAT AND THIGH
- REGULAR STRAIGHT LEG
- REGULAR INSEAM
- 15 1/2" LEG OPENING

STANDARD FIT



TRAVELER PANT

- SITS BELOW WAIST
- RELAXED SEAT AND THIGH
- SLIGHT TAPERED LEG
- REGULAR INSEAM
- 14 1/2" LEG OPENING

RELAXED FIT



EASY PANT

- SITS BELOW WAIST
- RELAXED SEAT AND THIGH
- SLIGHT TAPERED LEG
- REGULAR INSEAM
- 15" LEG OPENING

RELAXED FIT



HEADWEAR

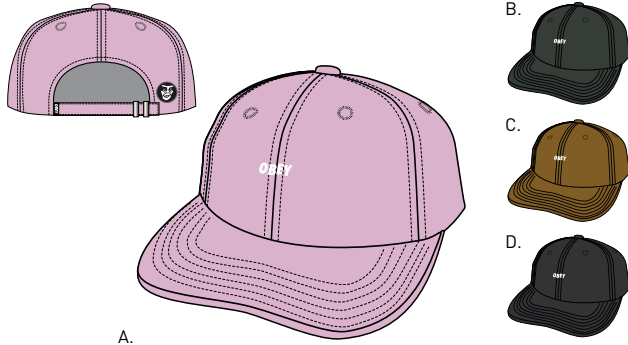


HEADWEAR

JUMBLE BAR III 6 PANEL HAT

100580071

- Unstructured 6 panel strapback hat
- Classic "dad hat" with curved visor, direct logo embroidery, and self fabric strap closure.
- 100% Cotton



	COLOR	O/S		COLOR	O/S
A.	PALE PURPLE		C.	TAPENADE	
B.	DARK FOREST		D.	BLACK	

MASK 6 PANEL HAT

100580149

- Unstructured 6 panel strapback hat
- Pigment-dyed hat with low profile crown height, curved visor, direct logo embroidery and self fabric strap closure
- 100% Cotton



	COLOR	O/S		COLOR	O/S
A.	TEAL		C.	TAPENADE	
B.	BLACK				

DAYTON 6 PANEL HAT

100580163

- Unstructured 6 panel strapback hat
- Yarn-dyed plaid hat with low profile crown height, curved visor, direct logo embroidery and self fabric strap closure
- 100% Cotton



	COLOR	O/S		COLOR	O/S
A.	KHAKI MULTI				

CUTTY 6 PANEL SNAPBACK

100580074

- Unstructured 6 panel snapback hat
- Brushed twill hat with mid profile crown height, curved visor, direct logo embroidery, and plastic snap closure
- 100% Cotton



	COLOR	O/S		COLOR	O/S
A.	DARK TEAL		C.	BLUE	
B.	WHEAT BROWN		D.	BLACK	

AMPLIFIER 6 PANEL SNAPBACK

100580151

- Unstructured 6 panel snapback hat
- Mid profile crown height, curved visor, direct logo embroidery, and plastic snap closure
- 100% Cotton



	COLOR	O/S		COLOR	O/S
A.	BLUE		C.	BLACK	
B.	FOREST				

BLACKBOOK 6 PANEL SNAPBACK

100580153

- Unstructured 6 panel snapback hat
- Mid profile crown height, curved visor, direct logo embroidery, and plastic snap closure
- 100% Cotton



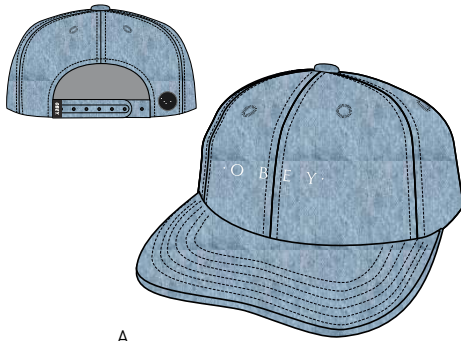
	COLOR	O/S		COLOR	O/S
A.	BLACK		B.	FOREST	

HEADWEAR

INTENTION 6 PANEL SNAPBACK

100580150

- Unstructured 6 panel snapback hat
- Mid profile crown height, curved visor, direct logo embroidery, and plastic snap closure
- 100% Cotton



A.

B.

	COLOR	O/S		COLOR	O/S
A.	LIGHT DENIM		B.	BLACK	

BORREGO 6 PANEL SNAPBACK

100580154

- Unstructured 6 panel snapback hat
- Mid profile crown height, curved visor, direct logo embroidery, and plastic snap closure.
- 100% Cotton



A.

B.

	COLOR	O/S		COLOR	O/S
A.	DARK TEAL		B.	BLACK	

INTERNATIONAL 6 PANEL SNAPBACK

100580160

- Unstructured 6 panel snapback hat
- Brushed twill hat with mid profile crown height, curved visor, direct logo embroidery, and plastic snap closure
- 100% Cotton



A.

B.

	COLOR	O/S		COLOR	O/S
A.	BLACK		B.	KHAKI	

SLAPPER 6 PANEL SNAPBACK

100580161

- Unstructured 6 panel snapback hat
- Brushed twill hat with mid profile crown height, curved visor, direct logo embroidery, and plastic snap closure
- 100% Cotton



A.

B.

	COLOR	O/S		COLOR	O/S
A.	BLACK		B.	TEAL	

90'S JUMBLE BAR 6 PANEL SNAPBACK

100580076

- Unstructured 6 panel snapback hat
- Brushed twill hat with mid profile crown height, curved visor, direct logo embroidery, and plastic snap closure
- 100% Cotton



A.

B.

C.

	COLOR	O/S		COLOR	O/S
A.	PICANTE / BLACK		C.	DARK TEAL / BLACK	
B.	BONE BROWN / BLACK				

FUBAR 6 PANEL SNAPBACK

100580060

- Unstructured 6 panel snapback hat
- Brushed twill hat with mid profile crown height, curved visor, direct logo embroidery, and plastic snap closure
- 100% Cotton



A.

B.

	COLOR	O/S		COLOR	O/S
A.	BONE BROWN		B.	BLACK	

HEADWEAR

LYNWOOD 6 PANEL SNAPBACK

- Unstructured 6 panel snapback hat
- Mid profile crown height with flat visor, direct logo embroidery and plastic snap closure
- 100% Cotton

100580155



	COLOR	O/S		COLOR	O/S
A.	BROWN		C.	PINE	
B.	BLACK				

RESIST 6 PANEL SNAPBACK

- Unstructured 6 panel snapback hat
- Mid profile crown height with flat visor, eyes woven label patch and plastic snap closure
- 100% Cotton

100580133



	COLOR	O/S		COLOR	O/S
A.	TIGER CAMO		C.	FIELD CAMO	
B.	CHOC. CHIP CAMO				

CULVER 6 PANEL SNAPBACK

- Unstructured 6 panel snapback hat
- Pigment dyed hat with mid profile crown height, flat visor, eyes logo woven label patch and plastic snap closure
- 100% Cotton

100580156



	COLOR	O/S		COLOR	O/S
A.	BLACK		C.	NAVY	
B.	DARK TEAL				

HADLEY 6 PANEL STRAPBACK

- Unstructured 6 panel strapback hat
- Pigment-dyed hat with mid profile crown height, flat visor, metal eyelets, direct logo embroidery and self fabric strap closure
- 100% Cotton

100580158



	COLOR	O/S		COLOR	O/S
A.	TAPENADE		C.	ARMY	
B.	BLACK				

VAIL 6 PANEL STRAPBACK

- Unstructured 6 panel strapback hat
- Nylon hat with mid profile crown height, flat visor, direct logo embroidery and self fabric strap closure
- 100% Nylon

100580157



	COLOR	O/S		COLOR	O/S
A.	YELLOW		C.	BLACK	
B.	PINE				

MEMORIES 6 PANEL STRAPBACK

- Unstructured 6 panel strapback hat
- Pigment-dyed hat with mid profile crown height, flat visor, metal eyelets, direct logo embroidery and self fabric strap closure
- 100% Cotton

100580159



	COLOR	O/S		COLOR	O/S
A.	BLACK		B.	ARMY	

HEADWEAR

INTERNATIONAL STRAPBACK

100570081

- Unstructured 5 panel strapback hat
- Classic profile crown height with curved visor, direct logo embroidery, and self fabric strap closure
- 100% Cotton



	COLOR	O/S		COLOR	O/S
A.	KAHKI		C.	NAVY	
B.	BLACK				

RHYTHM STRAPBACK

100570082

- Unstructured 5 panel strapback hat
- Classic profile crown height with curved visor, direct logo embroidery and self fabric strap closure
- 100% Cotton



	COLOR	O/S		COLOR	O/S
A.	BLACK		B.	DARK TEAL	

REMAIN SNAPBACK

100570080

- Unstructured 5 panel snapback hat
- Classic profile crown height with flat visor, direct logo embroidery, and plastic snap closure
- 100% Cotton



	COLOR	O/S		COLOR	O/S
A.	BLACK		B.	TEAL	

JUMBLE BAR SNAPBACK

100570079

- Unstructured 5 panel snapback hat
- Classic profile crown height with flat visor, direct logo embroidery, and plastic snap closure
- 100% Cotton



	COLOR	O/S		COLOR	O/S
A.	LIGHT DENIM		C.	BLACK	
B.	DARK PINE				

ESTABLISHED 89 SNAPBACK II

100570051

- Unstructured 5 panel snapback hat
- Classic profile crown height with flat visor, embroidered patch, and plastic snap closure
- 100% Cotton



	COLOR	O/S		COLOR	O/S
A.	NAVY		B.	BLACK	

SLAPPER TRUCKER HAT

100500017

- Structured 5 panel trucker hat
- Classic profile crown height with flat visor, screenprinted logo, and plastic snap closure
- 100% Polyester



	COLOR	O/S		COLOR	O/S
A.	YELLOW		B.	BLACK	

HEADWEAR

JUMBLE BAR TRUCKER HAT

- Structured 5 panel trucker hat
- Classic profile crown height with flat visor, screenprinted logo and plastic snap closure
- 100% Polyester

100500016

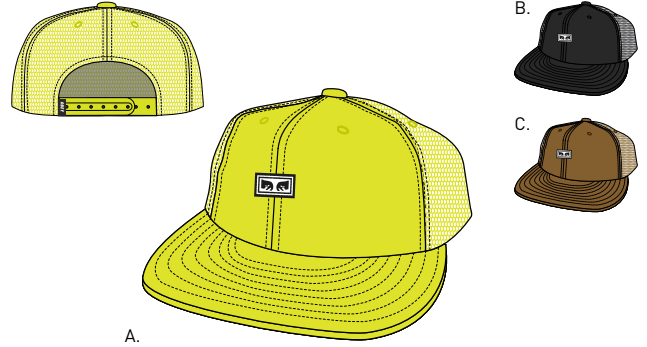


	COLOR	O/S		COLOR	O/S
A.	PINE		C.	BLACK	
B.	YELLOW				

RESIST TRUCKER HAT

- Unstructured 6 panel trucker hat
- Mid profile crown height with flat visor, direct eyes logo embroidery and plastic snap closure
- 65% Cotton / 35% Polyester

100500018



	COLOR	O/S		COLOR	O/S
A.	SAFETY GREEN		C.	BONE BROWN	
B.	BLACK				

RUNNIN TRUCKER HAT

- Unstructured 6 panel trucker hat
- Mid profile crown height with flat visor, direct logo embroidery and plastic snap closure
- 65% Cotton / 35% Polyester

100500014



	COLOR	O/S		COLOR	O/S
A.	BONE BROWN		C.	BLACK	
B.	SAFETY GREEN				

CLASSIC PATCH SNAPBACK II

- Structured 5 panel snapback hat
- Classic profile crown height with flat visor, embroidered logo patch, and plastic snap closure
- 100% Cotton

100570083



	COLOR	O/S		COLOR	O/S
A.	DARK PINE		C.	BLACK	
B.	TAPENADE				

JUMBLE BAR II 5 PANEL HAT

- Classic fit 5 panel camp hat
- Flat visor, direct logo embroidery and webbing strap closure
- 100% Cotton

100490049



	COLOR	O/S		COLOR	O/S
A.	PINE		C.	BLACK	
B.	DARK KHAKI				

INTERNATIONAL 5 PANEL HAT

- Classic fit 5 panel camp hat
- Flat visor, screenprinted logo, and webbing strap closure
- 100% Cotton

100490050



	COLOR	O/S		COLOR	O/S
A.	KHAKI		C.	NAVY	
B.	BLACK				

HEADWEAR

UNION 5 PANEL HAT

- Classic fit 5 panel camp hat
- Flat visor, direct logo embroidery, and webbing strap closure
- 100% Cotton

100490051



	COLOR	O/S		COLOR	O/S
A.	PLUM		C.	BLACK	
B.	DARK TEAL				

DECADES BUCKET HAT

- Classic fit, bell shape six panel bucket hat
- Pigment-dyed bucket hat with two piece visor and direct logo embroidery at side panel of hat
- 100% Cotton

100520013



	COLOR	O/S		COLOR	O/S
A.	DARK TEAL		C.	BLACK	
B.	TAPENADE				

INTERNATIONAL BUCKET HAT

- Classic fit 3 panel bucket hat
- Flat two piece visor and screenprinted logo
- 100% Cotton

100520015

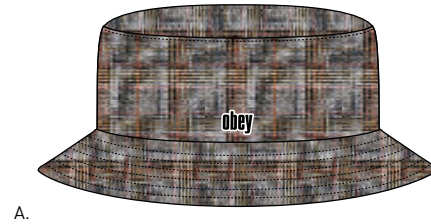


	COLOR	O/S		COLOR	O/S
A.	NAVY		C.	BLACK	
B.	KHAKI				

DAYTON BUCKET HAT

- Classic fit three panel bucket hat
- Flat two piece visor and direct logo embroidery embellishment at front panel of hat
- 100% Cotton

100520016



	COLOR	O/S		COLOR	O/S
A.	KHAKI MULTI				

ELDEN FLEXFIT HAT

- Unstructured 6 panel stretch cotton snapback hat
- Custom shape with a mid profile crown height, flat visor, and direct logo embroidery
- 98% Cotton / 2% Spandex

100140435



	COLOR	O/S		COLOR	O/S
A.	ARMY		B.	BLACK	

BIRCH FLEXFIT HAT

- Unstructured 6 panel stretch cotton Flexfit hat
- Custom shape with a mid profile crown height, flat visor, and direct logo embroidery
- 98% Cotton / 2% Spandex

100140437



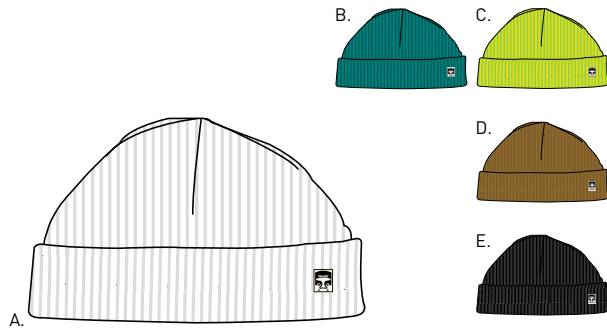
	COLOR	O/S		COLOR	O/S
A.	PINE		B.	BLACK	

HEADWEAR

MICRO BEANIE

- Extra shallow height cuffed beanie
- Features rib knit construction with removable logo enamel pin
- 100% Acrylic

100030125



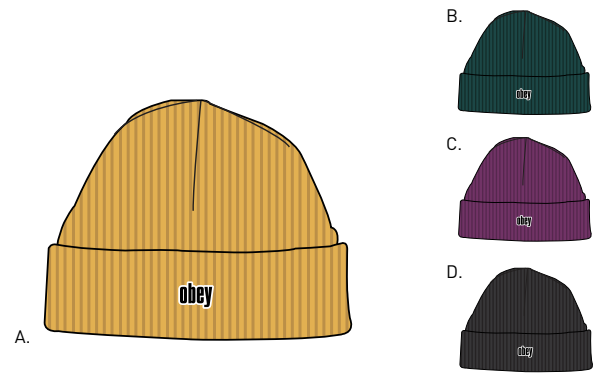
	COLOR	O/S
A.	WHITE	
B.	TEAL	
C.	BRIGHT GREEN	

	COLOR	O/S
D.	TAPENADE	
E.	BLACK	

JUNGLE BEANIE

- Medium height cuffed beanie
- Features rib knit construction with direct logo embroidery
- 100% Acrylic

100030139



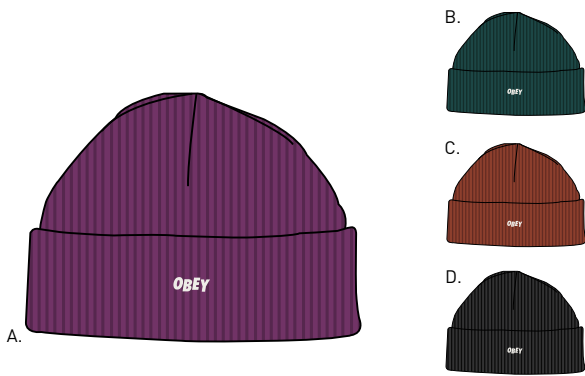
	COLOR	O/S
A.	DUSTY YELLOW	
B.	DARK TEAL	

	COLOR	O/S
C.	PLUM	
D.	BLACK	

HANGMAN BEANIE

- Extra shallow height cuffed beanie
- Features rib knit construction and direct logo embroidery
- 100% Acrylic

100030102



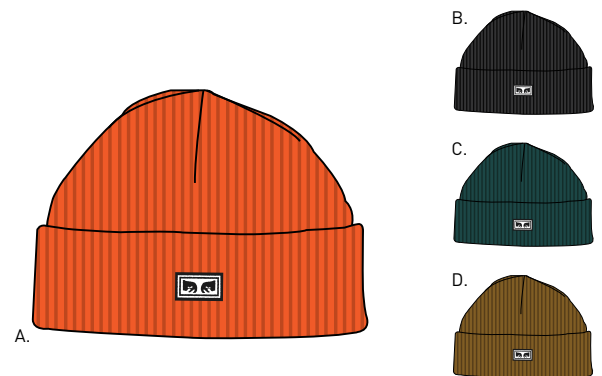
	COLOR	O/S
A.	PLUM	
B.	DARK PINE	

	COLOR	O/S
C.	PICANTE	
D.	BLACK	

SUBVERSION BEANIE

- Shallow height cuffed beanie
- Features rib knit construction and logo woven label patch
- 100% Acrylic

100030118



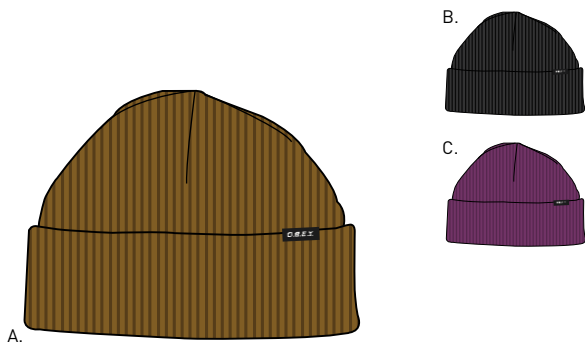
	COLOR	O/S
A.	ORANGE	
B.	BLACK	

	COLOR	O/S
C.	DARK PINE	
D.	TAPENADE	

ACACIA BEANIE

- Shallow height cuffed beanie
- Features rib knit construction with logo woven clip label.
- 100% Acrylic

100030112



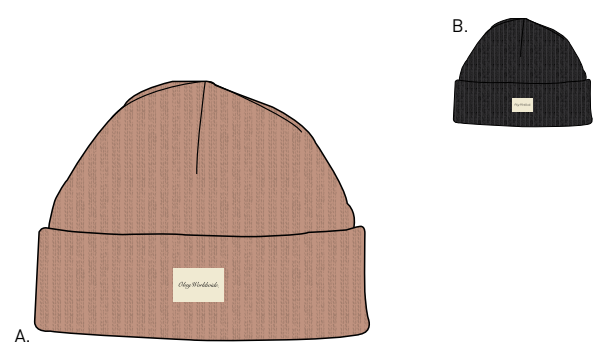
	COLOR	O/S
A.	TAPENADE	
B.	BLACK	

	COLOR	O/S
C.	PLUM	

CHURCHILL BEANIE

- Medium height cuffed beanie
- Features heavyweight rib knit construction and logo woven label patch
- 100% Acrylic

100030120



	COLOR	O/S
A.	DUSTY ROSE	

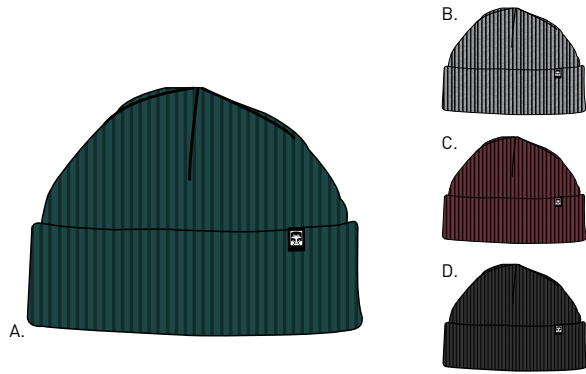
	COLOR	O/S
B.	BLACK	

HEADWEAR

RUGER 89 BEANIE

100030086

- Medium height cuffed beanie
- Features shaker knit construction and logo woven clip label
- 100% Acrylic

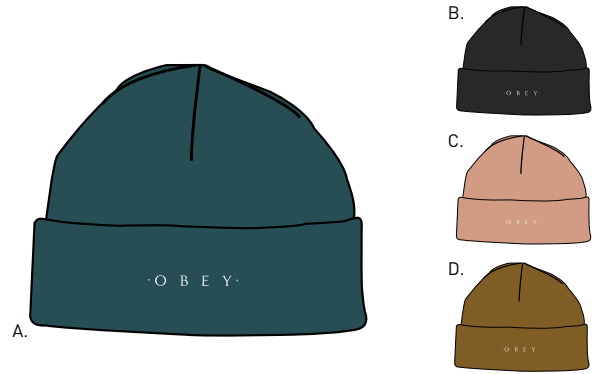


	COLOR	O/S		COLOR	O/S
A.	DARK PINE		C.	BURGUNDY	
B.	HEATHER GREY		D.	BLACK	

UNION BEANIE

100030131

- Medium height cuffed beanie
- Features jersey knit construction with direct logo embroidery.
- 100% Acrylic



	COLOR	O/S		COLOR	O/S
A.	PINE		C.	DUSTY CORAL	
B.	BLACK		D.	TAPENADE	

ICON EYES BEANIE

100030132

- Tall height cuffed beanie
- Features jersey knit construction with logo woven label patch
- 100% Acrylic

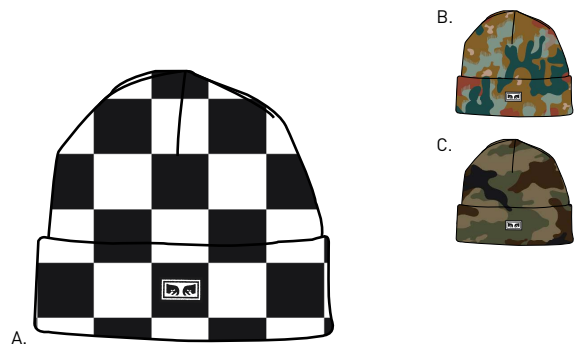


	COLOR	O/S		COLOR	O/S
A.	TAPENADE		D.	BLACK	
B.	DARK TEAL		E.	MAGENTA	
C.	PICANTE		F.	SAFETY GREEN	

STUDY BEANIE

100030140

- Tall height cuffed beanie
- Features custom jacquard knit construction with logo woven label patch
- 100% Acrylic



	COLOR	O/S		COLOR	O/S
A.	CHECKER		C.	FIELD CAMO	
B.	DRIP CAMO				

RUNNIN BEANIE

100030133

- Tall height cuffed beanie
- Features jersey knit construction with direct logo embroidery
- 100% Acrylic



	COLOR	O/S		COLOR	O/S
A.	BLACK		C.	SAFETY GREEN	
B.	TAPENADE				

INTERNATIONAL BEANIE

100030134

- Tall height cuffed beanie
- Features jersey knit construction with direct logo embroidery
- 100% Acrylic



	COLOR	O/S		COLOR	O/S
A.	DARK TEAL		C.	BLACK	
B.	NAVY				

HEADWEAR

BORREGO BEANIE

- Tall height cuffed beanie
- Features jersey knit construction with direct logo embroidery
- 100% Acrylic



100030135



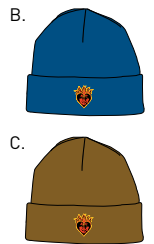
	COLOR	O/S		COLOR	O/S
A.	ORANGE		C.	BLACK	
B.	PINE				

MEMORIES BEANIE

- Tall height cuffed beanie
- Features jersey knit construction with direct logo embroidery
- 100% Acrylic



100030136



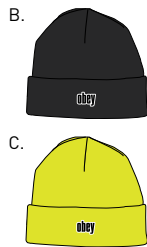
	COLOR	O/S		COLOR	O/S
A.	BLACK		C.	TAPENADE	
B.	BLUE				

HIGHLAND BEANIE

- Tall height cuffed beanie
- Features jersey knit construction with direct logo embroidery
- 100% Acrylic



100030137



	COLOR	O/S		COLOR	O/S
A.	PLUM		C.	SAFETY GREEN	
B.	BLACK				

HIGHLAND STRIPE BEANIE

- Tall height cuffed beanie
- Features yarn-dyed stripe jersey knit construction with direct logo embroidery
- 100% Acrylic



100030138



	COLOR	O/S		COLOR	O/S
A.	PICANTE MULTI		B.	DARK TEAL MULTI	

LEATHER ACCESSORIES

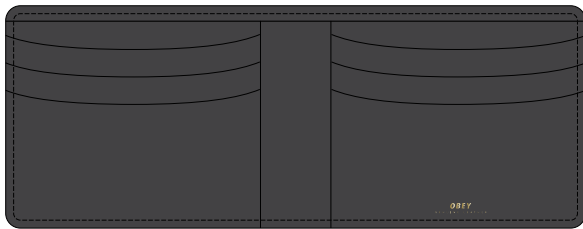


LEATHER ACCESSORIES

VANDAL BI FOLD WALLET

- Bi-fold wallet with multiple card holder and bill insert pocket
- OBEY gold foil branding and OBEY original gold rivet
- 100% Genuine Leather

100310088



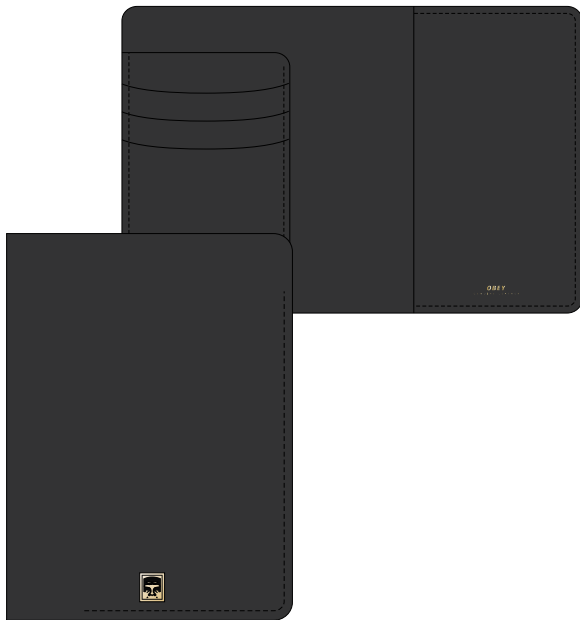
A.

	COLOR	O/S		
A.	BLACK			

VANDAL PASSPORT WALLET

- Passport wallet with multiple card holder and large insert pockets for passport and boarding pass
- OBEY gold foil branding and OBEY original gold rivet
- 100% Genuine Leather

100310089



A.

	COLOR	O/S		
A.	BLACK			

VANDAL ID WALLET

- ID wallet with multiple card holder
- OBEY original gold rivet branding
- 100% Genuine Leather

100310087



A.

	COLOR	O/S		
A.	BLACK			

VANDAL LEATHER BELT

- Leather belt with antique brass hardware
- OBEY original gold rivet branding and interior gold foil logo
- 100% Genuine Leather

100050025



A.

	COLOR	S	M	L
A.	BLACK			

VANDAL LEATHER KEY CHAIN

- Key chain with gold finish hardware
- OBEY original gold rivet branding
- 100% Genuine Leather

100160015



A.

	COLOR	O/S		
A.	BLACK			

FUAX LEATHER ACCESSORIES

GENTRY II ZIP AROUND WALLET

100310090

- Faux leather zip around wallet with multiple card and bills inserts
- Interior and exterior OBEY gold foil logo and shiny nickel hardware
- 100% Polyurethane



A.

	COLOR	O/S		
A.	BLACK			

GENTRY BI FOLD WALLET

100310070

- Faux leather bi-fold wallet with clear plastic ID window and multiple card inserts
- Interior and exterior OBEY gold foil logo
- 100% Polyurethane



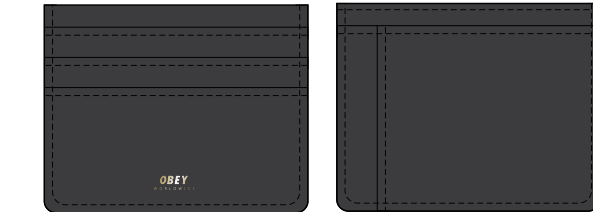
A.

	COLOR	O/S		
A.	BLACK			

GENTRY ID WALLET

100310071

- Faux leather ID wallet with multiple card inserts and bills insert center pocket
- Exterior OBEY gold foil logo
- 100% Polyurethane



A.

	COLOR	O/S		
A.	BLACK			



BAGS & ACCESSORIES



BAGS & ACCESSORIES

DROP OUT JUVEE BACKPACK

100010096

- Backpack with logo label, zipper front pocket, internal laptop sleeve, large main compartment, padded shoulder straps for comfort, and chrome finished hardware and zipper pulls
- 17" tall
- 100% Polyester



	COLOR	Q/S		COLOR	Q/S
A.	CHECKER		C.	TEAL	
B.	DRIP CAMO		D.	BLACK	

DROP OUT DAY PACK

100010099

- Backpack with logo label, zipper front pocket, internal laptop sleeve, large main compartment, padded shoulder straps for comfort, utility bottom loop, and chrome finished hardware and zipper pulls
- 18 1/2" tall with full doubled slider zipper for full access
- 100% Polyester



	COLOR	Q/S		COLOR	Q/S
A.	DRIP CAMO		C.	TEAL	
B.	CHECKER		D.	BLACK	

DROP OUT WEEKENDER DUFFLE

100010092

- Large tote bag with webbing straps
- Features a zipper top closure with exterior pocket with black coil zipper and chrome zipper pull, black hardware and an logo label
- 17" X 27" X 6"
- 100% Polyester



	COLOR	Q/S		COLOR	Q/S
A.	TEAL		C.	CHECKER	
B.	DRIP CAMO		D.	BLACK	

DROP OUT TRAVELLER BAG

100010094

- Small essential bag with multiple pockets and adjustable shoulder strap
- Features a double compartment at center with zip closures and outside pockets with logo label
- 6.5" tall
- 100% Polyester



	COLOR	Q/S		COLOR	Q/S
A.	BLACK		C.	DRIP CAMO	
B.	CHECKER		D.	TEAL	

DROP OUT SLING BAG

100010093

- Sling bag with logo label, multiple pockets and a sturdy plastic closure, adjustable webbing strap to wear comfortably over the shoulders or waist, and chrome finished hardware with black coil zipper
- 18" wide
- 100% Polyester

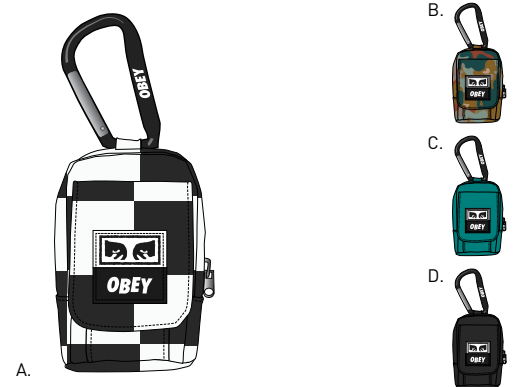


	COLOR	Q/S		COLOR	Q/S
A.	DRIP CAMO		C.	TEAL	
B.	CHECKER		D.	BLACK	

DROP OUT UTILITY SMALL BAG

100010095

- Small urban utility bag with carabiner clip hook
- Features one compartment zip pocket and front velcro closure pocket with logo laser engraved carabiner clip, a belt loop at back for multiple usage and logo label
- 5" tall
- 100% Polyester



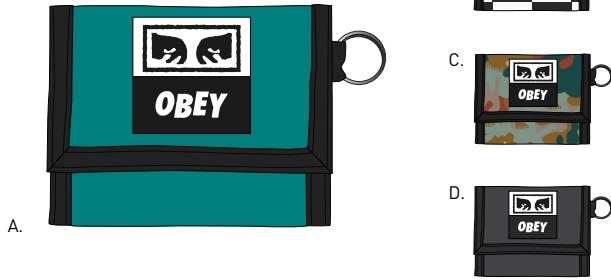
	COLOR	Q/S		COLOR	Q/S
A.	CHECKER		C.	TEAL	
B.	DRIP CAMO		D.	BLACK	

BAGS & ACCESSORIES

DROP OUT TRI-FOLD WALLET

100310099

- Tri-fold wallet with multiple card slots, clear ID window, an exterior logo label, and chrome key ring and black grosgrain edging
- 100% Polyester

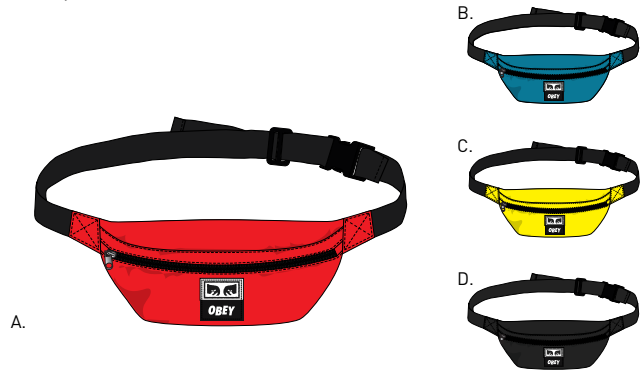


	COLOR	O/S		COLOR	O/S
A.	TEAL		C.	DRIP CAMO	
B.	CHECKER		D.	BLACK	

DAILY SLING BAG

100010100

- Features a logo label with single pocket and a sturdy plastic closure with adjustable webbing strap to wear comfortably over the shoulders or waist, and chrome finished hardware with black coil zipper
- 15" X 6"
- 100% Polyester



	COLOR	O/S		COLOR	O/S
A.	HOT RED		C.	YELLOW	
B.	ROYAL BLUE		D.	BLACK	

WASTED HIP BAG

100010098

- Single pocket hip bag with zipper opening, adjustable webbing strap and sturdy plastic hardware closure. Features an logo eye label and offered in multiple fabrications
- 12 1/2" X 4 1/2"
- 100% Cotton



	COLOR	O/S		COLOR	O/S
A.	RED PLAID		D.	FIELD CAMO	
B.	TEAL CORD		E.	DENIM	
C.	BLACK TWILL				

PATCHED DAILY SLING BAG

100010101

- Features patched flannel pattern, a logo label with single pocket and a sturdy plastic closure with adjustable webbing strap to wear comfortably over the shoulders or waist, and chrome finished hardware with black coil zipper
- 15" X 6"
- 100% Polyester

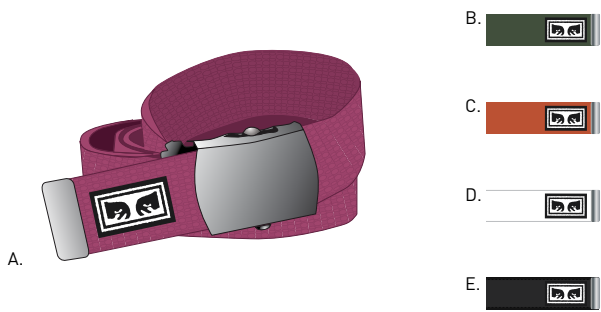


	COLOR	O/S			
A.	PLAID MULTI				

BIG BOY BELT

100050026

- Adjustable webbing belt with antique silver hardware and a OBEY original label
- 60% Cotton / 40% Polyester



	COLOR	O/S		COLOR	O/S
A.	RASPBERRY		D.	WHITE	
B.	PINE		E.	BLACK	
C.	DUSTY ORANGE				

ICON BRAIDED ELASTIC BELT

100050027

- Braided elastic belt with faux leather trims and black hardware
- Features OBEY original art stamped at faux leather tip and one pin roller belt buckle
- BELT: 100% Polyester, TRIM: 100% Genuine Leather



	COLOR	S/M	M/L		
A.	BLACK				

TOTES & SOCKS

BE MINE TOTE

- Large one compartment tote bag with natural webbing handle
- Features an original OBEY artwork
- 20" x 15" x 5"
- 100% Cotton

100551775



A.

COLOR		O/S		COLOR		O/S	
A.	NATURAL			B.	BLACK		

OBEY IDEAL POWER

- Large one compartment tote bag with natural webbing handle
- Features an original OBEY artwork
- 20" x 15" x 5"
- 100% Cotton

100551778



A.

COLOR		O/S		COLOR		O/S	
A.	BLACK			B.	NATURAL		

CHECKERS SOCKS

- Athletic socks with comfortable French terry footing
- Features a multicolor checkers jacquard and OBEY original logo embroidery
- 85% Cotton / 13% Polyester / 2% Elastane

100260122



A.

COLOR		O/S		COLOR		O/S	
A.	CORAL PINK MULTI			C.	BLACK MULTI		
B.	TEAL MULTI						

SCORPION SOCKS

- Athletic socks with comfortable French terry footing
- Features an OBEY original Scorpion jacquard print and embroidery
- 85% Cotton / 13% Polyester / 2% Elastane

100260123



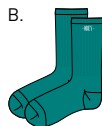
A.

COLOR		O/S		COLOR		O/S	
A.	PINE MULTI			B.	BLACK MULTI		

NEW TIMES EMBROIDERY SOCKS

- Athletic socks with comfortable French terry footing
- OBEY original logo embroidery
- 85% Cotton / 13% Polyester / 2% Elastane

100260111



A.

COLOR		O/S		COLOR		O/S	
A.	GOLDEN OLIVE / WHITE			C.	CORAL PINK / WHITE		
B.	TEAL / WHITE						

DALE SOCKS

- Athletic socks with comfortable French terry footing
- Features a multicolor stripe and OBEY original logo embroidery
- 85% Cotton / 13% Polyester / 2% Elastane

100260119



A.

COLOR		O/S		COLOR		O/S	
A.	PINE / WHITE			C.	CORAL PINK / WHITE		
B.	GOLDEN OLIVE / WHITE						

SOCKS & PINS

OBEY JUMBLED SOCKS

- Athletic socks with comfortable French terry footing
- OBEY original Jumble embroidery
- 85% Cotton / 13% Polyester / 2% Elastane

100260089



COLOR		Q/S		COLOR		Q/S	
A.	HOT RED / WHITE			D.	WHITE		
B.	BLUE / WHITE			E.	BLACK		
C.	TAPENADE / WHITE						

COOPER II SOCKS

- Athletic socks with comfortable French terry footing
- Features a multicolor stripe and OBEY original logo embroidery
- 85% Cotton / 13% Polyester / 2% Elastane

100260093



COLOR		Q/S		COLOR		Q/S	
A.	WHITE / LEMON			C.	WHITE / CORAL PINK		
B.	WHITE / TEAL			D.	WHITE / BLACK		

OBEY INSIDE OUT PIN

- OBEY Inside Out pin with alloy finish enamel colored metal
- 2 locking backs to keep pin in place
- 100% Alloy

100220044



COLOR		Q/S	
A.	BLACK / WHITE		

BE MINE PIN

- OBEY Face pin with alloy finish enamel colored metal
- 2 locking backs to keep pin in place
- 100% Alloy

100220047



COLOR		Q/S	
A.	BLACK / RED		

SCORPION ROSE PIN

- OBEY Scorpion pin with alloy finish enamel colored metal
- 2 locking backs to keep pin in place
- 100% Alloy

100220045



COLOR		Q/S	
A.	BLACK		

SURVEILLANCE PIN

- OBEY Surveillance pin with alloy finish enamel colored metal
- 2 locking backs to keep pin in place
- 100% Alloy

100220046



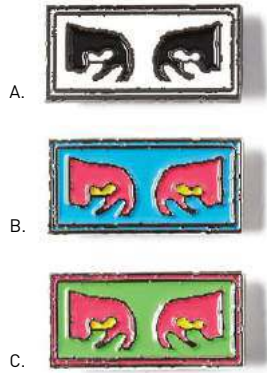
COLOR		Q/S	
A.	BLACK / RED		

PINS

OBEY EYES PIN

- OBEY Eyes pin with alloy finish enamel colored metal
- 2 locking backs to keep pin in place
- 100% Alloy

100220036



	COLOR	O/S		COLOR	O/S
A.	BLACK / WHITE		C.	GREEN MULTI	
B.	BLUE MULTI				

CREEPER PIN

- OBEY Creeper gold alloy finish enamel colored metal
- 2 locking backs to keep pin in place
- 100% Alloy

100220013

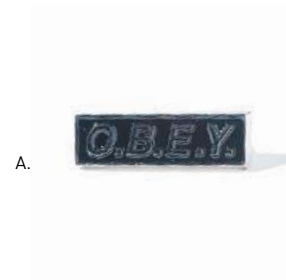


	COLOR	O/S			
A.	WHITE				

O.B.E.Y. PIN

- OBEY pin with silver alloy finish enamel colored metal
- 2 locking backs to keep pin in place
- 100% Alloy

100220022



	COLOR	O/S			
A.	BLACK				

EIGHTY NINE PIN

- OBEY Eighty Nine pin with gold alloy finish enamel colored metal
- 2 locking backs to keep pin in place
- 100% Alloy

100220011



	COLOR	O/S			
A.	WHITE				

ESSENTIALS

STICKER PACK 4

100270007

- assorted stickers for the OBEY fiends. Spread it!



A.

	COLOR	0/S		
A.	ASSORTED			

STICKER PACK 2

100270001

- assorted stickers for the OBEY fiends. Spread it!



A.

	COLOR	0/S		
A.	ASSORTED			

COVERT TO OVERT BOOK

326000035M

- OBEY: Covert to Overt showcases Shepard Fairey's evolution from works on paper to grander art installations, cross-cultural artworks, and music/art collaborations. The book also includes his ubiquitous streetwear and chronicles his return to public artworks. His signature blend of politics, street culture, and art makes Fairey unlike any other subculture/street artist working today.
- This book showcases the significant amount of art he has created the last several years: street murals, mixed-media installations, art/music events, countless silk screens, and work from his extremely successful OBEY brand.



A.

	COLOR	0/S		
A.	ASSORTED			

P.O.P.

OBEY INT. CONSPIRACY POP STAND

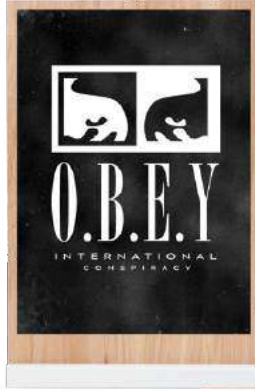
- Wood table top display
- Featuring a wheat pasted OBEY graphic
- 14" H X 7" W

326000135

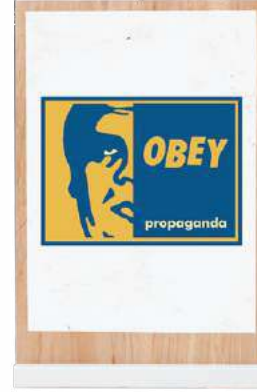
SLAP ON POP STAND

- Wood table top display
- Featuring a wheat pasted OBEY graphic
- 14" H X 7" W

326000136



A.



A.

COLOR		O/S	
A.	ASSORTED		

COLOR		O/S	
A.	ASSORTED		

OBEY PIN PACK 6

- 50 1" pins
- Featuring seasonal OBEY artwork. Perfect for hooking customers up at checkout

326000137



A.

COLOR		O/S	
A.	ASSORTED		

JACKETS CATEGORY ROUND UP

121800351
HARD WORK LABOR JACKET



121800341
RISE UP BDU JACKET



121800354
BENDER EYES JACKET



121800334
LENSE JACKET



121800350
EYES JACKET



121800322
CLIFTON LEOPARD JACKET



121800233
BASTARDS LEATHER JACKET



121800239
BASTARDS PU JACKET



121800333
RUNAROUND EYES JACKET



121800336
BOUNCER PUFFER JACKET



121800337
CROSTOWN II ANORAK



121800339
DERBY BOX PARKA



121810006
PACKING VEST



121800344
LOCK DOWN ANORAK



121800343
MORPHINE BOX PARKA



121800338
DEBASER II JACKET



121800342
OUTBOUND JACKET



121800335
DROPOUT LINER JACKET



121800346
DILLINGER HOODED JACKET



121800345
DILLINGER TRUCKER JACKET



121800348
IGGY INSULATED JACKET



121160013
STATION SHIRT JACKET



121800349
RUSSET PARKA



121800340
SINGFORD PARKA



121800355
SOTO DIVISION JACKET



121800287
HELLER II JACKET



WOVEN CATEGORY ROUND UP

181200192
EIGHTY NINE WOVEN LS



181200193
EIGHTY NINE STRIPES LS



181200221
KEBLE DENIM WOVEN



181210187
HESTER WOVEN SS



181200226
HESTER WOVEN LS



181210185
TOWNE WOVEN SS



181200223
TOWNE WOVEN LS



181210207
WICKER WOVEN SS



181200232
WICKER WOVEN LS



181210208
LOW END WOVEN SS



181200233
LOW END WOVEN LS



181200234
VENTURA WOVEN



181200245
VEDDER WOVEN



181200235
CONTINENTAL WOVEN



181200236
NELSON WOVEN



181200237
OUTPOST WOVEN



181200238
HOMEBOUND WOVEN



181210209
SWINDLE WOVEN SS



181200239
SWINDLE WOVEN LS



181210211
SCREW WOVEN SS



181200240
SCREW WOVEN LS



181210212
ROSIE WOVEN SS



181200241
ROSIE WOVEN LS



181210213
PROSPECT WOVEN SS



181200242
PROSPECT WOVEN LS



181210214
DIRTY LEO WOVEN SS



181200243
DIRTY LEO WOVEN LS



181210227
THRON WOVEN SS



181200244
THORN WOVEN

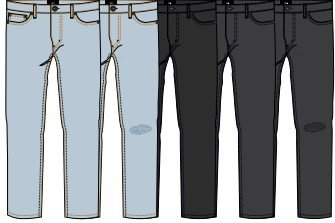


DENIM CATEGORY ROUND UP

142010064
BENDER EYES DENIM



142010055
JUVEE DENIM II



142010056
JUVEE FLOODED DENIM II



142010053
NEW THREAT DENIM II



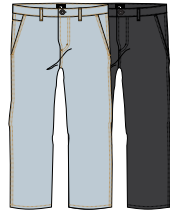
142010054
NEW THREAT CUT DENIM



142010050
BENDER 90'S DENIM



142010060
BENDER CARPENTER DENIM



142010063
HARD WORK DENIM



142020119
HARD WORK CARPENTER PANT



PANTS CATEGORY ROUND UP

142020121
HARDWORK LABOR PANT



142020103
FUBAR CARGO PANT



142020112
EASY PANT II



142020120
EYES PANT



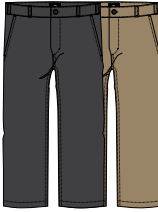
142020109
BORSTAL TRACK PANT



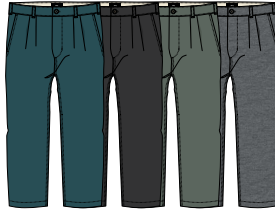
142020124
SAUCER PANT



142020099
LOITER PANT



142020106
FUBAR PLEATED PANT



142020113
STRAGGLER FLOODED PANT



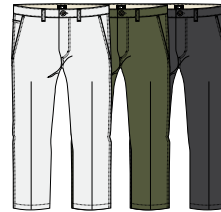
142020115
STRAGGLER STRIPE FLOODED PANT



142020114
STRAGGLER HOUNDSTOOTH FLOODED PANT



142020116
STRAGGLER CARPENTER PANT III



142020123
STRAGGLER PLAID CARPENTER PANT



142020097
RECON CARGO PANT



142020087
TRAVELER SLUB TWILL PANT



CUSTOM FLEECE CATEGORY ROUND UP

111600069
EIGHTY NINE ICON CREW



111620024
EIGHTY NINE ICON ZIP HOOD



111620034
BORSTAL TRACK JACKET



111620037
SAUCER POLO



111620025
LOFTY CREATURE COMFORTS CREW



111620026
LOFTY CREATURE COMFORTS HOOD



111620027
LOFTY CREATURE ZIP HOOD



112480022
ALL EYEZ CREW



112470017
ALL EYEZ HOOD



112460002
ALL EYEZ ZIP HOOD



112480010
OBEY EYES HEAVY CREW



112470007
OBEY EYEZ HEAVY HOOD



112470011
ANYWAY HOOD



112470032
PANIC HOOD



112470035
REASON ANORAK HOOD



112480029
NOUVELLE CREW



112470026
NOUVELLE HOOD



111620042
NOUVELLE MOCK NECK ZIP



111620044
GAZE MOCK NECK ZIP



112470028
CONSTRUCT HOOD



112480030
SAUCER CREW



111620039
MOUNTAIN MOCK NECK



112480035
CUPID CREW POLO

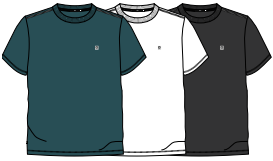


112480032
THORNS CREW



KNITS CATEGORY ROUND UP

131080226
EIGHTY NINE SOLID BOX TEE LS



131030078
EIGHTY NINE SOLID BOX TEE LS



131080227
EIGHTY NINE ICON BOX TEE SS



131030079
EIGHTY NINE ICON BOX TEE LS



131080182
APEX TEE SS



131030068
APEX TEE LS



131080072
WISEMAKER POCKET TEE



131080233
BURN CLASSIC TEE SS



131030085
WATERFALL CLASSIC TEE LS



131030069
NORMAL TEE LS



131080224
BORSTAL TEE SS



131030076
BORSTAL TEE LS



131090040
TONE POLO SS



131090041
STORM POLO SS



131040013
HERO CLASSIC POLO LS



131030082
PEARL CLASSIC MOCK ZIP LS



131040016
GIMME CLASSIC POLO LS



131090034
ALL EYEZ POLO SS



167151578
NOVEL OBEY MOCK NECK SS



167161578
NOVEL OBEY MOCK NECK LS



166911838
NOVEL OBEY 3 HEAVYWEIGHT CLASSIC CUSTOM TEE



167101838
NOVEL OBEY 3 HEAVYWEIGHT BOX LS



131080225
ALL EYEZ TEE SS



131030077
ALL EYEZ TEE LS



166911826
OBEY EYES 3 HEAVYWEIGHT BOX TEE



167101826
OBEY EYES 3 HEAVYWEIGHT BOX LS



KNITS CATEGORY ROUND UP

136881686
OBEY NEW WORLD 2 HOCKEY JERSEY



136881809
SCORPION ROSE HEAVY WEIGHT HOCKEY JERSEY



131080186
JUMBLE PIGMENT TEE SS



SWEATERS CATEGORY ROUND UP

151000040
COURT SWEATER



151010013
COURT CARDIGAN II



151000041
ROEBLING SWEATER



151000039
SCORPION SWEATER





ARTIST SERIES

MARILYN RONDON

Marilyn Rondon also known as Caliente Chica or DJ totally stoked was born in Valencia, Venezuela and immigrated to Miami, Florida with her family at the young age of 5. She attended magnet art schools throughout her early childhood but graduated a year late from Design and Architecture Senior High school. She moved to NYC in '06 after spending a summer living and working as a waitress in Nantucket, MA.

Her art journey continued as a shop assistant at Fun City tattoo and Dare Devil tattoo where she got back to the basics of drawing and watercolor painting. After working in the tattoo scene for several years- she left the shop life to pursue continued education courses at the School of Visual Arts in Manhattan as well as pursue her passion as a DJ.

After years of battling substance abuse and major depression; Marilyn relocated to Miami, FL where she cleaned up and honed in on her talents. She began painting murals for a living and showcased her first conceptual art piece Latina Seeks Thug at the little Haiti country club in Miami in 2014. That same year, she began self-publishing her magazine Dat Ass Zine and curated her third show I've been planning while you're playing at Art Basel. In 2016 Rondon published her first children's book Why does Mommy have tattoos? with lit Riot press.

Marilyn's unique look has landed her major ad campaigns (Reebok, Good American, Discount Universe, Katy Perry INDI, York Athletics MFG). She's been featured in music videos and walked her first fashion show for Gypsy Sport SS17. Marilyn resides in sunny south beach where she practices Kundalini Yoga and continues to expand her artistic vision as well as educate herself and her social media following on mental health, nutrition, hollisic living and mindfulness.

@CalienteChica

ARTIST SERIES: MARILYN RONDON

BASIC TEE - Regular fit crew neck tee with solid rib neck trims. Made in a heavyweight cotton. SOLID: 100% Cotton; HEATHER GREY: 90% Cotton / 10% Polyester
 BASIC LONG SLEEVE TEE - Regular fit crew neck long sleeve tee with set in rib trims. Made in a heavyweight cotton. SOLIDS: 100% Cotton; HEATHER GREY: 90% Cotton / 10% Polyester

ANGELS 163081835

SHIPPED BY COLOR	S.	M.	L.	XL.	XXL.
------------------	----	----	----	-----	------



WHITE

OBEY YOURSELF 163081836

SHIPPED BY COLOR	S.	M.	L.	XL.	XXL.
------------------	----	----	----	-----	------



TEAL

LIPS 163081837

SHIPPED BY COLOR	S.	M.	L.	XL.	XXL.
------------------	----	----	----	-----	------



GOLD

ANGELS 164901835

SHIPPED BY COLOR	S.	M.	L.	XL.	XXL.
------------------	----	----	----	-----	------



WHITE

OBEY YOURSELF 164901836

SHIPPED BY COLOR	S.	M.	L.	XL.	XXL.
------------------	----	----	----	-----	------



GOLD

HEAVYWEIGHT CLASSIC BOX TEE



166911812 FIGHT THOSE THAT CONTROL

HEAVYWEIGHT CLASSIC BOX TEE

Heavyweight fabric custom box fit. Garment dye with softener wash. Made in the U.S.A.
100% Cotton



NOVEL OBEY 166911578

SHIPPED BY COLOR	S.	M.	L.	XL.	XXL.
------------------	----	----	----	-----	------



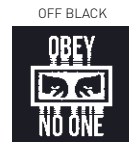
CORAL

NO ONE 166911559

SHIPPED BY COLOR	S.	M.	L.	XL.	XXL.
------------------	----	----	----	-----	------



SPECTRA YELLOW



OBEY STAR FACE 166911668

SHIPPED BY COLOR	S.	M.	L.	XL.	XXL.
------------------	----	----	----	-----	------



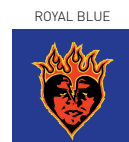
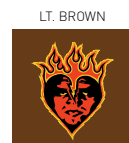
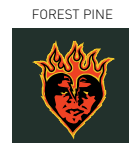
EMERALD

BE MINE 166911775

SHIPPED BY COLOR	S.	M.	L.	XL.	XXL.
------------------	----	----	----	-----	------

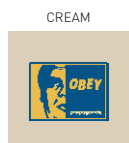
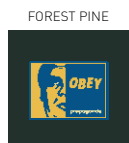
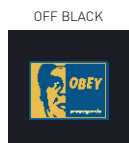


OFF BLACK



SLAP ON 166911770

SHIPPED BY COLOR	S.	M.	L.	XL.	XXL.
------------------	----	----	----	-----	------



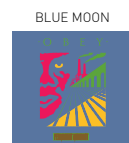
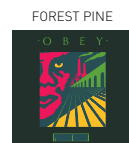
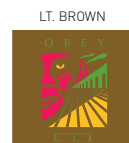
FIRE RED

OBEY PERMANENT MIDNIGHT 166911691

SHIPPED BY COLOR	S.	M.	L.	XL.	XXL.
------------------	----	----	----	-----	------



OFF BLACK





HEAVYWEIGHT CLASSIC BOX TEE

Heavyweight fabric custom box fit. Garment dye with softener wash. Made in the U.S.A.
100% Cotton

CURIOUS KIDDO'S

166911821

SHIPPED BY COLOR	S.	M.	L.	XL.	XXL.
------------------	----	----	----	-----	------

CORAL



DIJON



CREAM



ATLANTIC GREEN

CALL TO ARMS

166911825

SHIPPED BY COLOR	S.	M.	L.	XL.	XXL.
------------------	----	----	----	-----	------

LT. BROWN



DIJON



EMERALD



OFF BLACK

FREE YOUR MIND

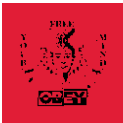
166911793

SHIPPED BY COLOR	S.	M.	L.	XL.	XXL.
------------------	----	----	----	-----	------

OFF BLACK



FIRE RED



SPECTRA YELLOW



WHITE

OBEDIENCE MIND GATES

166911810

SHIPPED BY COLOR	S.	M.	L.	XL.	XXL.
------------------	----	----	----	-----	------

OFF BLACK



FIRE RED



WHITE



ROYAL BLUE

WARNING

166911811

SHIPPED BY COLOR	S.	M.	L.	XL.	XXL.
------------------	----	----	----	-----	------

FOREST PINE



ROYAL BLUE



FIRE RED



OFF BLACK

FIGHT THOSE THAT CONTROL

166911812

SHIPPED BY COLOR	S.	M.	L.	XL.	XXL.
------------------	----	----	----	-----	------

FOREST PINE



FIRE RED



ROYAL BLUE



OFF BLACK



PREMIUM / BASIC TEES



165361831 SURVEILLANCE

PREMIUM / BASIC TEES

PREMIUM TEE - Slim fit short sleeve tee with set in rib neck trim. Features soft lightweight jersey fabrication. SOLID: 100% Cotton; HEATHER GREY: 90% Cotton / 10% Polyester
 BASIC TEE - Regular fit crew neck tee with solid rib neck trims. Features heavyweight jersey fabrication. SOLID: 100% Cotton; HEATHER GREY: 90% Cotton / 10% Polyester



BLACK

OBEY WORLD DOMINATION GLOBE 165361779					
SHIPPED BY COLOR	S.	M.	L.	XL.	XXL.



OBEY WORLD DOMINATION GLOBE 163081779					
SHIPPED BY COLOR	S.	M.	L.	XL.	XXL.



BLACK

OBEY DISSENT & DEFIANCE EAGLE 165361780					
SHIPPED BY COLOR	S.	M.	L.	XL.	XXL.

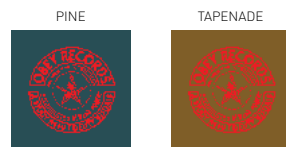


OBEY DISSENT & DEFIANCE EAGLE 163081780					
SHIPPED BY COLOR	S.	M.	L.	XL.	XXL.

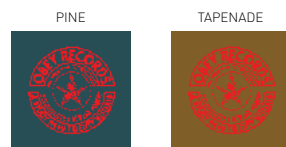


BLACK

OBEY VISUAL FIDELITY 165361781					
SHIPPED BY COLOR	S.	M.	L.	XL.	XXL.



OBEY VISUAL FIDELITY 163081781					
SHIPPED BY COLOR	S.	M.	L.	XL.	XXL.



PREMIUM / BASIC TEES

PREMIUM TEE - Slim fit short sleeve tee with set in rib neck trim. Features soft lightweight cotton jersey fabrication. SOLID: 100% Cotton; HEATHER GREY: 90% Cotton / 10% Polyester
 BASIC TEE - Regular fit crew neck tee with solid rib neck trims. Features heavyweight cotton jersey fabrication. SOLID: 100% Cotton; HEATHER GREY: 90% Cotton / 10% Polyester



BLACK

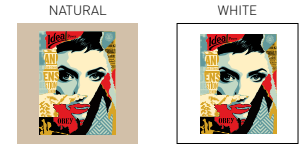
OBEY IDEAL POWER 165361778

SHIPPED BY COLOR	S.	M.	L.	XL.	XXL.
------------------	----	----	----	-----	------



OBEY IDEAL POWER 163081778

SHIPPED BY COLOR	S.	M.	L.	XL.	XXL.
------------------	----	----	----	-----	------



WHITE

OBEY INT. CONSPIRACY 165361790

SHIPPED BY COLOR	S.	M.	L.	XL.	XXL.
------------------	----	----	----	-----	------



OBEY INT. CONSPIRACY 163081790

SHIPPED BY COLOR	S.	M.	L.	XL.	XXL.
------------------	----	----	----	-----	------



NAVY

OBEY INT. 165361789

SHIPPED BY COLOR	S.	M.	L.	XL.	XXL.
------------------	----	----	----	-----	------



OBEY INT. 163081789

SHIPPED BY COLOR	S.	M.	L.	XL.	XXL.
------------------	----	----	----	-----	------



PREMIUM / BASIC TEES

PREMIUM TEE - Slim fit short sleeve tee with set in rib neck trim. Features soft lightweight jersey fabrication. SOLID: 100% Cotton; HEATHER GREY: 90% Cotton / 10% Polyester
 BASIC TEE - Regular fit crew neck tee with solid rib neck trims. Features heavyweight jersey fabrication. SOLID: 100% Cotton; HEATHER GREY: 90% Cotton / 10% Polyester



WHITE

OBEY PEACE & JUSTICE

165361783

SHIPPED BY COLOR	S.	M.	L.	XL.	XXL.
------------------	----	----	----	-----	------

BLACK SAGE



OBEY PEACE & JUSTICE

163081783

SHIPPED BY COLOR	S.	M.	L.	XL.	XXL.
------------------	----	----	----	-----	------

BLACK SAGE



WHITE

OBEY DEATH & DISSENT

165361782

SHIPPED BY COLOR	S.	M.	L.	XL.	XXL.
------------------	----	----	----	-----	------

BLACK SAGE



OBEY DEATH & DISSENT

163081782

SHIPPED BY COLOR	S.	M.	L.	XL.	XXL.
------------------	----	----	----	-----	------

BLACK SAGE



SAGE

OBEY STAR FACE

165361668

SHIPPED BY COLOR	S.	M.	L.	XL.	XXL.
------------------	----	----	----	-----	------

BLACK TAPENADE HTR. GREY



OBEY STAR FACE

163081668

SHIPPED BY COLOR	S.	M.	L.	XL.	XXL.
------------------	----	----	----	-----	------

BLACK TAPENADE HTR. GREY



PREMIUM / BASIC TEES

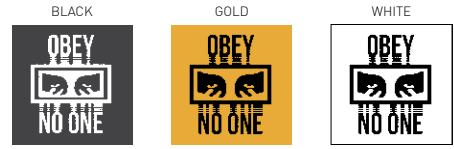
PREMIUM TEE - Slim fit short sleeve tee with set in rib neck trim. Features soft lightweight cotton jersey fabrication. SOLID: 100% Cotton; HEATHER GREY: 90% Cotton / 10% Polyester
 BASIC TEE - Regular fit crew neck tee with solid rib neck trims. Features heavyweight cotton jersey fabrication. SOLID: 100% Cotton; HEATHER GREY: 90% Cotton / 10% Polyester



FOREST GREEN

NO ONE 165361559

SHIPPED BY COLOR	S.	M.	L.	XL.	XXL.
------------------	----	----	----	-----	------



NO ONE 163081559

SHIPPED BY COLOR	S.	M.	L.	XL.	XXL.
------------------	----	----	----	-----	------



ROYAL BLUE

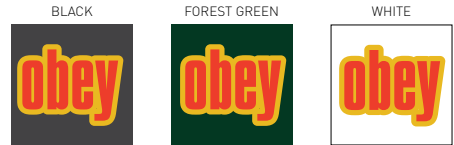
OBEY 1990 165361807

SHIPPED BY COLOR	S.	M.	L.	XL.	XXL.
------------------	----	----	----	-----	------



OBEY 1990 163081807

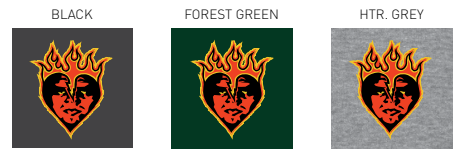
SHIPPED BY COLOR	S.	M.	L.	XL.	XXL.
------------------	----	----	----	-----	------



TAPENADE

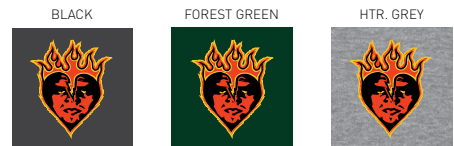
BE MINE 165361775

SHIPPED BY COLOR	S.	M.	L.	XL.	XXL.
------------------	----	----	----	-----	------



BE MINE 163081775

SHIPPED BY COLOR	S.	M.	L.	XL.	XXL.
------------------	----	----	----	-----	------



PREMIUM / BASIC TEES

PREMIUM TEE - Slim fit short sleeve tee with set in rib neck trim. Features soft lightweight jersey fabrication. SOLID: 100% Cotton; HEATHER GREY: 90% Cotton / 10% Polyester
 BASIC TEE - Regular fit crew neck tee with solid rib neck trims. Features heavyweight jersey fabrication. SOLID: 100% Cotton; HEATHER GREY: 90% Cotton / 10% Polyester



FOREST GREEN

SLAP ON 165361770

SHIPPED BY COLOR	S.	M.	L.	XL.	XXL.
------------------	----	----	----	-----	------



SLAP ON 163081770

SHIPPED BY COLOR	S.	M.	L.	XL.	XXL.
------------------	----	----	----	-----	------



BLACK

SURVEILLANCE 165361831

SHIPPED BY COLOR	S.	M.	L.	XL.	XXL.
------------------	----	----	----	-----	------



SURVEILLANCE 163081831

SHIPPED BY COLOR	S.	M.	L.	XL.	XXL.
------------------	----	----	----	-----	------



BLACK

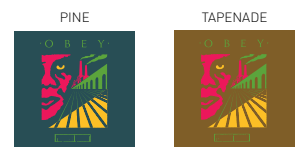
OBEY PERMANENT MIDNIGHT 165361777

SHIPPED BY COLOR	S.	M.	L.	XL.	XXL.
------------------	----	----	----	-----	------



OBEY PERMANENT MIDNIGHT 163081777

SHIPPED BY COLOR	S.	M.	L.	XL.	XXL.
------------------	----	----	----	-----	------



PREMIUM / BASIC TEES

PREMIUM TEE - Slim fit short sleeve tee with set in rib neck trim. Features soft lightweight cotton jersey fabrication. SOLID: 100% Cotton; HEATHER GREY: 90% Cotton / 10% Polyester
 BASIC TEE - Regular fit crew neck tee with solid rib neck trims. Features heavyweight cotton jersey fabrication. SOLID: 100% Cotton; HEATHER GREY: 90% Cotton / 10% Polyester



GOLD

OBEY PROP & OBEDIENCE 165361792

SHIPPED BY COLOR	S.	M.	L.	XL.	XXL.
------------------	----	----	----	-----	------

POWDER BLUE



WHITE



OBEY PROP & OBEDIENCE 163081792

SHIPPED BY COLOR	S.	M.	L.	XL.	XXL.
------------------	----	----	----	-----	------

POWDER BLUE



WHITE



PINE

NOVEL OBEY 165361578

SHIPPED BY COLOR	S.	M.	L.	XL.	XXL.
------------------	----	----	----	-----	------

BLACK



RASPBERRY



WHITE



NOVEL OBEY 163081578

SHIPPED BY COLOR	S.	M.	L.	XL.	XXL.
------------------	----	----	----	-----	------

BLACK



RASPBERRY



WHITE



SAGE

OBEY JUMBLED EYES 165361822

SHIPPED BY COLOR	S.	M.	L.	XL.	XXL.
------------------	----	----	----	-----	------

BLACK



TAPENADE



WHITE



OBEY JUMBLED EYES 163081822

SHIPPED BY COLOR	S.	M.	L.	XL.	XXL.
------------------	----	----	----	-----	------

BLACK



TAPENADE



WHITE



PREMIUM / BASIC TEES

PREMIUM TEE - Slim fit short sleeve tee with set in rib neck trim. Features soft lightweight jersey fabrication. SOLID: 100% Cotton; HEATHER GREY: 90% Cotton / 10% Polyester
 BASIC TEE - Regular fit crew neck tee with solid rib neck trims. Features heavyweight jersey fabrication. SOLID: 100% Cotton; HEATHER GREY: 90% Cotton / 10% Polyester



ROYAL BLUE

BETTER DAYS 2 165361791

SHIPPED BY COLOR	S.	M.	L.	XL.	XXL.
------------------	----	----	----	-----	------



BETTER DAYS 2 163081791

SHIPPED BY COLOR	S.	M.	L.	XL.	XXL.
------------------	----	----	----	-----	------



TAPENADE

OBEY RECORDS 2 165361786

SHIPPED BY COLOR	S.	M.	L.	XL.	XXL.
------------------	----	----	----	-----	------



OBEY RECORDS 2 163081786

SHIPPED BY COLOR	S.	M.	L.	XL.	XXL.
------------------	----	----	----	-----	------



GOLD

CURIOUS KIDDO'S 165361821

SHIPPED BY COLOR	S.	M.	L.	XL.	XXL.
------------------	----	----	----	-----	------



CURIOUS KIDDO'S 163081821

SHIPPED BY COLOR	S.	M.	L.	XL.	XXL.
------------------	----	----	----	-----	------



PREMIUM / BASIC TEES

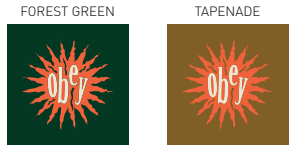
PREMIUM TEE - Slim fit short sleeve tee with set in rib neck trim. Features soft lightweight cotton jersey fabrication. SOLID: 100% Cotton; HEATHER GREY: 90% Cotton / 10% Polyester
 BASIC TEE - Regular fit crew neck tee with solid rib neck trims. Features heavyweight cotton jersey fabrication. SOLID: 100% Cotton; HEATHER GREY: 90% Cotton / 10% Polyester



RASPBERRY

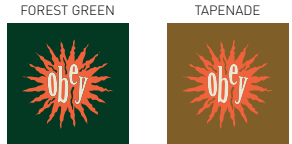
ALIVE 165361787

SHIPPED BY COLOR	S.	M.	L.	XL.	XXL.
------------------	----	----	----	-----	------



ALIVE 163081787

SHIPPED BY COLOR	S.	M.	L.	XL.	XXL.
------------------	----	----	----	-----	------



FOREST GREEN

DOPE LORE 165361794

SHIPPED BY COLOR	S.	M.	L.	XL.	XXL.
------------------	----	----	----	-----	------



DOPE LORE 163081794

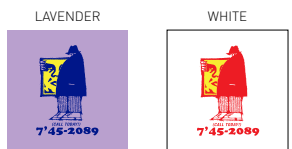
SHIPPED BY COLOR	S.	M.	L.	XL.	XXL.
------------------	----	----	----	-----	------



POWDER BLUE

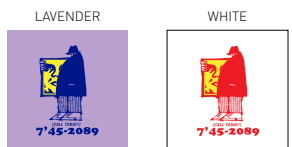
SHADY DEALS 165361795

SHIPPED BY COLOR	S.	M.	L.	XL.	XXL.
------------------	----	----	----	-----	------



SHADY DEALS 163081795

SHIPPED BY COLOR	S.	M.	L.	XL.	XXL.
------------------	----	----	----	-----	------



PREMIUM / BASIC TEES

PREMIUM TEE - Slim fit short sleeve tee with set in rib neck trim. Features soft lightweight jersey fabrication. SOLID: 100% Cotton; HEATHER GREY: 90% Cotton / 10% Polyester
 BASIC TEE - Regular fit crew neck tee with solid rib neck trims. Features heavyweight jersey fabrication. SOLID: 100% Cotton; HEATHER GREY: 90% Cotton / 10% Polyester

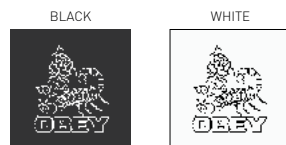


PINE

SCORPION ROSE						165361809
SHIPPED BY COLOR	S.	M.	L.	XL.	XXL.	



SCORPION ROSE						163081809
SHIPPED BY COLOR	S.	M.	L.	XL.	XXL.	



LAVENDER

FREE YOUR MIND						165361793
SHIPPED BY COLOR	S.	M.	L.	XL.	XXL.	

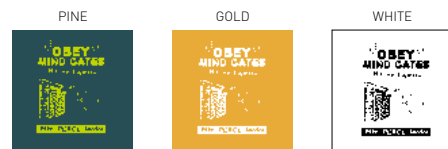


FREE YOUR MIND						163081793
SHIPPED BY COLOR	S.	M.	L.	XL.	XXL.	



BLACK

OBEY MIND GATES						165361810
SHIPPED BY COLOR	S.	M.	L.	XL.	XXL.	



OBEY MIND GATES						163081810
SHIPPED BY COLOR	S.	M.	L.	XL.	XXL.	



PREMIUM / BASIC TEES

PREMIUM TEE - Slim fit short sleeve tee with set in rib neck trim. Features soft lightweight cotton jersey fabrication. SOLID: 100% Cotton; HEATHER GREY: 90% Cotton / 10% Polyester
 BASIC TEE - Regular fit crew neck tee with solid rib neck trims. Features heavyweight cotton jersey fabrication. SOLID: 100% Cotton; HEATHER GREY: 90% Cotton / 10% Polyester



RED

CULTURAL RIGOR MORTIS					165361818
SHIPPED BY COLOR	S.	M.	L.	XL.	XXL.

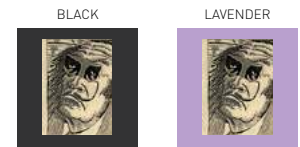


CULTURAL RIGOR MORTIS					163081818
SHIPPED BY COLOR	S.	M.	L.	XL.	XXL.

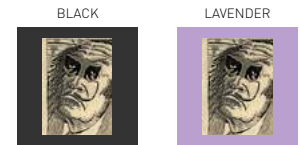


TEAL

METAMORPHOSIS					165361800
SHIPPED BY COLOR	S.	M.	L.	XL.	XXL.

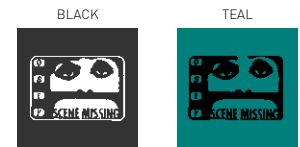


METAMORPHOSIS					163081800
SHIPPED BY COLOR	S.	M.	L.	XL.	XXL.

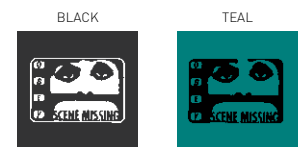


LAVENDER

SCENE MISSING					165361799
SHIPPED BY COLOR	S.	M.	L.	XL.	XXL.



SCENE MISSING					163081799
SHIPPED BY COLOR	S.	M.	L.	XL.	XXL.



PREMIUM / BASIC TEES

PREMIUM TEE - Slim fit short sleeve tee with set in rib neck trim. Features soft lightweight jersey fabrication. SOLID: 100% Cotton; HEATHER GREY: 90% Cotton / 10% Polyester
 BASIC TEE - Regular fit crew neck tee with solid rib neck trims. Features heavyweight jersey fabrication. SOLID: 100% Cotton; HEATHER GREY: 90% Cotton / 10% Polyester



POWDER BLUE

MEDIUM IS THE MESSAGE

165361796

SHIPPED BY COLOR	S.	M.	L.	XL.	XXL.
------------------	----	----	----	-----	------

LAVENDER



WHITE



MEDIUM IS THE MESSAGE

163081796

SHIPPED BY COLOR	S.	M.	L.	XL.	XXL.
------------------	----	----	----	-----	------

LAVENDER



WHITE



TEAL



CRISIS

165361819

SHIPPED BY COLOR	S.	M.	L.	XL.	XXL.
------------------	----	----	----	-----	------

BLACK



WHITE



CRISIS

163081819

SHIPPED BY COLOR	S.	M.	L.	XL.	XXL.
------------------	----	----	----	-----	------

BLACK



WHITE



BASIC POCKET TEES

Regular fit short sleeve pocket tee with rib trims. Features heavyweight cotton jersey fabrication.
100% Cotton

OBEY JUMBLED

163061216

SHIPPED BY COLOR	S.	M.	L.	XL.	XXL.
------------------	----	----	----	-----	------

NAVY



FOREST GREEN



WHITE



BLACK

OBEY EYES 3

163061826

SHIPPED BY COLOR	S.	M.	L.	XL.	XXL.
------------------	----	----	----	-----	------

BLACK



NAVY



FOREST GREEN



WHITE

PREMIUM CONTRAST TEE

Regular fit short sleeve tee with contrast set in rib trim. Made in an extra soft lightweight cotton.
 SOLID: 100% Cotton; HEATHER GREY: 90% Cotton / 10% Polyester

OBEY STAR FACE

166651668

SHIPPED BY COLOR	S.	M.	L.	XL.	XXL.

POWDER BLUE / BLACK



TAPENADE / BLACK



WHITE / RED

OBEY 1990

166651807

SHIPPED BY COLOR	S.	M.	L.	XL.	XXL.

POWDER BLUE / BLACK



WHITE / BLACK



TAPENADE / BLACK

SPOONIE

166651808

SHIPPED BY COLOR	S.	M.	L.	XL.	XXL.

POWDER BLUE / BLACK



HTR. GREY / BLACK



WHITE / BLACK

ALIVE

166651787

SHIPPED BY COLOR	S.	M.	L.	XL.	XXL.

TAPENADE / BLACK



POWDER BLUE / BLACK



LAVENDER / BLACK

BASIC LONG SLEEVE TEES

Regular fit crew neck long sleeve tee with set in rib trims. Made in a heavyweight cotton
 SOLIDS: 100% Cotton; HEATHER GREY: 90% Cotton / 10% Polyester

BE MINE 164901775

SHIPPED BY COLOR	S.	M.	L.	XL.	XXL.
------------------	----	----	----	-----	------



CURIOUS KIDDO'S 164901821

SHIPPED BY COLOR	S.	M.	L.	XL.	XXL.
------------------	----	----	----	-----	------



SCORPION ROSE 164901809

SHIPPED BY COLOR	S.	M.	L.	XL.	XXL.
------------------	----	----	----	-----	------



FIGHT THOSE THAT CONTROL 164901812

SHIPPED BY COLOR	S.	M.	L.	XL.	XXL.
------------------	----	----	----	-----	------



FREE YOUR MIND 164901793

SHIPPED BY COLOR	S.	M.	L.	XL.	XXL.
------------------	----	----	----	-----	------



SCENE MISSING 164901799

SHIPPED BY COLOR	S.	M.	L.	XL.	XXL.
------------------	----	----	----	-----	------



BASIC PULLOVER HOOD FLEECE

Regular fit hooded fleece with pouch pocket, rib trim and set in sleeves
 SOLID: 80% Cotton / 20% Polyester; HEATHER GREY: 52% Cotton / 48% Polyester

OBEY NEW WORLD					111731644
SHIPPED BY COLOR	S.	M.	L.	XL.	XXL.

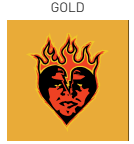
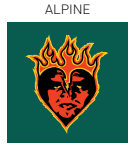
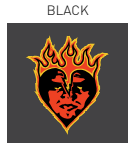


LAVENDER

BE MINE					111731775
SHIPPED BY COLOR	S.	M.	L.	XL.	XXL.



ROYAL BLUE



BETTER DAYS OUTLINE					111731824
SHIPPED BY COLOR	S.	M.	L.	XL.	XXL.

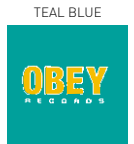
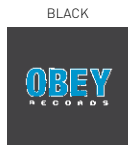


TEAL BLUE

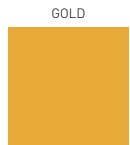
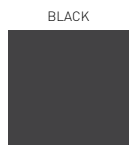
OBEY RECORDS 2					111731786
SHIPPED BY COLOR	S.	M.	L.	XL.	XXL.



RED



OBEY MIND GATES					111731810
SHIPPED BY COLOR	S.	M.	L.	XL.	XXL.



ALPINE

FIGHT THOSE THAT CONTROL					111731812
SHIPPED BY COLOR	S.	M.	L.	XL.	XXL.



BLACK



BASIC BOX CREW NECK FLEECE

Oversized fit box crew neck fleece with rib trims and set in sleeves
50% Cotton / 50% Polyester

OBEY STAR FACE

114981668

SHIPPED BY COLOR	S.	M.	L.	XL.	XXL.

BLACK



NAVY



HTR. GREY



FOREST GREEN

CURIOS KIDDO'S

114981821

SHIPPED BY COLOR	S.	M.	L.	XL.	XXL.

CAROLINA BLUE



GOLD



LT. PINK

SCORPION ROSE

114981809

SHIPPED BY COLOR	S.	M.	L.	XL.	XXL.

BLACK



DARK GREEN



GOLD

FREE YOUR MIND

114981793

SHIPPED BY COLOR	S.	M.	L.	XL.	XXL.

FOREST GREEN



GOLD



BLACK

BASIC ZIP HOOD

Regular fit hooded fleece with zip front, rib trim and set in sleeve
 SOLID: 80% Cotton / 20% Polyester; HEATHER GREY: 52% Cotton / 48% Polyester

THE CREEPER

111751247

SHIPPED BY COLOR	S.	M.	L.	XL.	XXL.
------------------	----	----	----	-----	------

NAVY



HTR. GREY



BLACK

OBHEY NEW WORLD 3

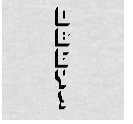
111751820

SHIPPED BY COLOR	S.	M.	L.	XL.	XXL.
------------------	----	----	----	-----	------

NAVY



HTR. GREY



BLACK

**CUSTOM HEAVYWEIGHT PIGMENT DYED
TEES, LONG SLEEVES TEES, AND FLEECE**



166731811 WARNING

CUSTOM HEAVYWEIGHT PIGMENT TEE

Custom fit short sleeve pigment dyed crew neck tee with set in rib trims. Features a heavyweight jersey fabrication. 100% Cotton.

NOVEL OBEY

166721578

SHIPPED BY COLOR	S.	M.	L.	XL.	XXL.
------------------	----	----	----	-----	------

DUSTY BLACK



DUSTY TAPENADE



DUSTY LAVENDER



DUSTY TEAL BLUE

OBEY JUMBLE LO-FI

166721489

SHIPPED BY COLOR	S.	M.	L.	XL.	XXL.
------------------	----	----	----	-----	------

DUSTY BLACK



DUSTY DARK TEAL



DUSTY GOLD



DUSTY DARK ROSE

OBEY INT. CONSPIRACY

166721790

SHIPPED BY COLOR	S.	M.	L.	XL.	XXL.
------------------	----	----	----	-----	------

DUSTY BLACK



DUSTY TEAL BLUE



DUSTY DARK ROSE



DUSTY LAVENDER

OBEY TYPEWRITTER

166721657

SHIPPED BY COLOR	S.	M.	L.	XL.	XXL.
------------------	----	----	----	-----	------

DUSTY BLACK



DUSTY DARK TEAL



DUSTY GOLD



DUSTY GRAPE

OBEY RECORDS 2

166721786

SHIPPED BY COLOR	S.	M.	L.	XL.	XXL.
------------------	----	----	----	-----	------

DUSTY BLACK



DUSTY GRAPE



DUSTY DARK TEAL

ALIVE

166721787

SHIPPED BY COLOR	S.	M.	L.	XL.	XXL.
------------------	----	----	----	-----	------

DUSTY BLACK



DUSTY DARK TEAL



DUSTY TAPENADE

CUSTOM HEAVYWEIGHT PIGMENT LONG SLEEVE TEE

Custom hfit long sleeve crew neck pigment dyed tee with set in rib trims. Features a heavyweight jersey fabrication. 100% Cotton.

NOVEL OBEY

166731578

SHIPPED BY COLOR	S.	M.	L.	XL.	XXL.
------------------	----	----	----	-----	------

DUSTY BLACK



DUSTY TAPENADE



DUSTY TEAL BLUE



DUSTY LAVENDER

OBEY NEW WORLD 3

166731820

SHIPPED BY COLOR	S.	M.	L.	XL.	XXL.
------------------	----	----	----	-----	------

DUSTY BLACK



DUSTY GRAPE



DUSTY GOLD



DUSTY DARK TEAL

OBEY MIND GATES

166731810

SHIPPED BY COLOR	S.	M.	L.	XL.	XXL.
------------------	----	----	----	-----	------

DUSTY BLACK



DUSTY DARK TEAL



DUSTY DARK ROSE



DUSTY TAPENADE

WARNING

166731811

SHIPPED BY COLOR	S.	M.	L.	XL.	XXL.
------------------	----	----	----	-----	------

DUSTY DARK TEAL



DUSTY GRAPE



DUSTY TEAL BLUE



DUSTY BLACK

CUSTOM PIGMENT HOODED FLEECE

Custom fit pigment dyed fleece pullover hoodie with set in sleeves and pouch pocket at front. Features a heavyweight fleece fabrication.
80% Cotton / 20% Polyester

ANYWAY

112651638

SHIPPED BY COLOR	S.	M.	L.	XL.	XXL.

DUSTY BLACK



DUSTY TAPENADE



DUSTY PINE



DUSTY ROSE

OBEY INT.

112651789

SHIPPED BY COLOR	S.	M.	L.	XL.	XXL.

DUSTY BLACK



DUSTY TAPENADE



DUSTY ROSE



DUSTY PINE

OBEY EYES 3

112651826

SHIPPED BY COLOR	S.	M.	L.	XL.	XXL.

DUSTY TAPENADE



DUSTY PINE



DUSTY ROSE



DUSTY BLACK

OBEY INSIDE OUT

112651827

SHIPPED BY COLOR	S.	M.	L.	XL.	XXL.

DUSTY BLACK



DUSTY PINE



DUSTY ROSE



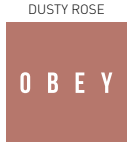
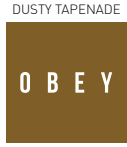
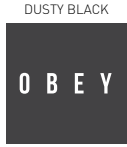
DUSTY TAPENADE

CUSTOM PIGMENT CREW FLEECE

Custom box fit pigment dyed fleece crew neck with set in rib trims. Features a heavyweight fleece fabrication.
80% Cotton / 20% Polyester

ANYWAY 112691638

SHIPPED BY COLOR	S.	M.	L.	XL.	XXL.
------------------	----	----	----	-----	------



DUSTY PINE

OBEY INSIDE OUT 112691827

SHIPPED BY COLOR	S.	M.	L.	XL.	XXL.
------------------	----	----	----	-----	------



DUSTY ROSE

CUSTOM PIGMENT ANORAK HOODED FLEECE

Custom box fit pigment dyed anorak hooded fleece with set in rib trims and silver zipper. Features a heavyweight fleece fabrication.
80% Cotton / 20% Polyester

NOVEL OBEY 112751578

SHIPPED BY COLOR	S.	M.	L.	XL.	XXL.
------------------	----	----	----	-----	------



DUSTY PINE

OBEY WORLDWIDE OUTLINE 112751695

SHIPPED BY COLOR	S.	M.	L.	XL.	XXL.
------------------	----	----	----	-----	------



DUSTY ROSE

CUSTOM PIGMENT MOCK NECK FLEECE

Custom box fit pigment dyed mock neck fleece with set in rib trims and silver zipper. Features a heavyweight fleece fabrication.
80% Cotton / 20% Polyester

NOVEL OBEY

112771578

SHIPPED BY COLOR	S.	M.	L.	XL.	XXL.

DUSTY BLACK



DUSTY TAPENADE



DUSTY PINE



DUSTY ROSE

OBEY WORLDWIDE OUTLINE

112771695

SHIPPED BY COLOR	S.	M.	L.	XL.	XXL.

DUSTY BLACK



DUSTY TAPENADE



DUSTY ROSE



DUSTY PINE

**CUSTOM HEAVYWEIGHT BLEACH DYED
TEES, LONG SLEEVES, AND FLEECE**



166751777 OBEY PERMANENT MIDNIGHT

BLEACH TIE DYE TEE

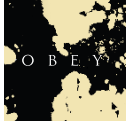
Regular fit short sleeve crew neck tee bleach tie dyed with set in rib trims. Features a heavyweight jersey fabrication.
100% Cotton

NOVEL OBEY

166741578

SHIPPED BY COLOR	S.	M.	L.	XL.	XXL.
------------------	----	----	----	-----	------

BLACK



TAPENADE



DARK TEAL



ROSE

OBEY JUMBLE LO-FI

166741489

SHIPPED BY COLOR	S.	M.	L.	XL.	XXL.
------------------	----	----	----	-----	------

BLACK



TAPENADE



ROSE



DARK TEAL

OBEY MIND GATES

166741810

SHIPPED BY COLOR	S.	M.	L.	XL.	XXL.
------------------	----	----	----	-----	------

BLACK



DARK TEAL



ROSE



TAPENADE

WARNING

166741811

SHIPPED BY COLOR	S.	M.	L.	XL.	XXL.
------------------	----	----	----	-----	------

TAPENADE



DARK TEAL



ROSE



BLACK

BLEACH TIE DYE LONG SLEEVE TEE

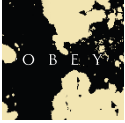
Regular fit long sleeve crew neck bleach tie dyed tee with set in rib trims. Features a heavyweight jersey fabrication.
100% Cotton

NOVEL OBEY

166751578

SHIPPED BY COLOR	S.	M.	L.	XL.	XXL.
------------------	----	----	----	-----	------

BLACK



TAPENADE



ROSE



DARK TEAL

NO ONE

166751559

SHIPPED BY COLOR	S.	M.	L.	XL.	XXL.
------------------	----	----	----	-----	------

BLACK



TAPENADE



DARK TEAL



ROSE

OBEY PERMANENT MIDNIGHT

166751777

SHIPPED BY COLOR	S.	M.	L.	XL.	XXL.
------------------	----	----	----	-----	------

BLACK



DARK TEAL



ROSE



TAPENADE

CALL TO ARMS

166751825

SHIPPED BY COLOR	S.	M.	L.	XL.	XXL.
------------------	----	----	----	-----	------

TAPENADE



DARK TEAL



ROSE



BLACK

BLEACH TIE DYE HOODED FLEECE

Regular fit hooded fleece bleach tie dyed with pouch pocket, rib trim and set in sleeves.
80% Cotton / 20% Polyester

OBEY NEW WORLD 112621644

SHIPPED BY COLOR	S.	M.	L.	XL.	XXL.
------------------	----	----	----	-----	------



DARK TEAL

OBEY JUMBLED EYES 112621822

SHIPPED BY COLOR	S.	M.	L.	XL.	XXL.
------------------	----	----	----	-----	------



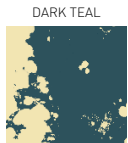
BLACK

BLEACH TIE DYE CREW FLEECE

Regular fit crew neck fleece bleach tie dyed with rib trims and set in sleeves.
80% Cotton / 20% Polyester

OBEY JUMBLED EYES 112631822

SHIPPED BY COLOR	S.	M.	L.	XL.	XXL.
------------------	----	----	----	-----	------



ROSE

OBEY NEW WORLD 112631644

SHIPPED BY COLOR	S.	M.	L.	XL.	XXL.
------------------	----	----	----	-----	------



TAPENADE

CUSTOM TEES



166141782 OBEY DEATH & DISSENT

SUPERIOR TEE

Slim fit crew neck tee with set in rib trim. Features a super soft fine knit jersey fabrication.
100% Cotton

OBEEY DISSENT

166141802

SHIPPED BY COLOR	S.	M.	L.	XL.	XXL.

LIMO BLACK



WHITE

TAPENADE



OBEEY WORLD DOMINATION GLOBE

166141779

SHIPPED BY COLOR	S.	M.	L.	XL.	XXL.

LIMO BLACK



STEEL GREEN

TAPENADE



OBEEY DISSENT & DEFIANCE EAGLE

166141780

SHIPPED BY COLOR	S.	M.	L.	XL.	XXL.

LIMO BLACK



CHILI PEPPER

WHITE



OBEEY PROP. TRADEMARK

166141803

SHIPPED BY COLOR	S.	M.	L.	XL.	XXL.

LIMO BLACK



CORSAIR

CHILI PEPPER



OBEEY VISUAL FIDELITY

166141781

SHIPPED BY COLOR	S.	M.	L.	XL.	XXL.

CORSAIR



LIMO BLACK

CHILI PEPPER



OBEEY PROP ENGINEERING

166141805

SHIPPED BY COLOR	S.	M.	L.	XL.	XXL.

LIMO BLACK



TAPENADE

CORSAIR



SUPERIOR TEE

Slim fit crew neck tee with set in rib trim. Features a super soft fine knit jersey fabrication.
100% Cotton

OBEDIENCE & DISSENT

166141782

SHIPPED BY COLOR	S.	M.	L.	XL.	XXL.

TAPENADE



WHITE



LIMO BLACK

OBEDIENCE UNITED

166141806

SHIPPED BY COLOR	S.	M.	L.	XL.	XXL.

LIMO BLACK



STEEL GREEN



WHITE

OBEY



NO ONE

PRINTED JACKETS

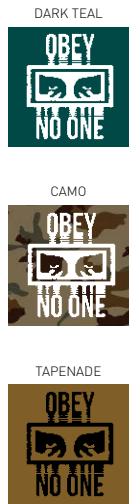


126251559 NO ONE

HOODED SNAP COACHES JACKET

Regular fit hooded nylon coaches jacket with cap sleeves. Features all over tricot lining and snap closure at center front.
SHELL: 100% Nylon; LINING: 100% Polyester

NO ONE						126251559
SHIPPED BY COLOR	S.	M.	L.	XL.	XXL.	



BLACK

ANYWAY						126251638
SHIPPED BY COLOR	S.	M.	L.	XL.	XXL.	

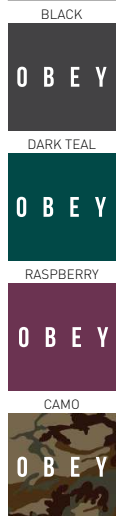


DARK TEAL

CLASSIC COACHES JACKET

Regular fit nylon jacket with raglan sleeves. Features an all over tricot lining and snap closure front.
SHELL: 100% Nylon; LINING: 100% Polyester

ANYWAY						125001638
SHIPPED BY COLOR	S.	M.	L.	XL.	XXL.	



TAPENADE

OBEY MIND GATES						125001810
SHIPPED BY COLOR	S.	M.	L.	XL.	XXL.	



DARK TEAL

ANORAK PULLOVER HOOD

Regular fit hooded nylon anorak jacket with raglan sleeves, tricot lining, patch pockets and zipper closure at center front and elastic cuffs.
100% Nylon

OBEY WORLDWIDE OUTLINE

126261695

SHIPPED BY COLOR	S.	M.	L.	XL.	XXL.
------------------	----	----	----	-----	------



FREE YOUR MIND

126261793

SHIPPED BY COLOR	S.	M.	L.	XL.	XXL.
------------------	----	----	----	-----	------



PRINTABLE FIT GUIDE

PREMIUM TEE

- Slim fit tee
- Feature extra soft lightweight fabrication
- Solid: 100% Cotton
Heather Grey: 90% Cotton / 10% Polyester



BASIC TEE

- Regular fit tee
- Feature heavyweight fabrication
- Solid: 100% Cotton
Heather Grey: 90% Cotton / 10% Polyester



BASIC POCKET TEE

- Regular fit short sleeve pocket tee
- Feature rib trims and a heavyweight cotton jersey fabrication
- 100% Cotton



PRINTABLE FIT GUIDE

BASIC LONG SLEEVE TEE

- Regular fit
- Feature heavyweight fabrication
- Solid: 100% Cotton
Heather Grey: 90% Cotton / 10% Polyester



HEAVYWEIGHT CLASSIC BOX TEE

- Custom box fit
- Feature garment dye with softener wash and a heavyweight fabrication
- Made in the U.S.A.
- 100% Cotton.



CUSTOM HEAVYWEIGHT PIGMENT TEE

- Regular fit pigment dyed tee
- Feature a heavyweight jersey fabrication
- 100% Cotton.



PRINTABLE FIT GUIDE

CUSTOM HEAVYWEIGHT PIGMENT LONG SLEEVE TEE

- Regular fit long sleeve crew pigment dyed tee
- Feature set in rib trims and heavyweight jersey fabrication
- 100% Cotton



SUPERIOR TEE

- Slim fit tee
- Feature super soft fine knit jersey fabrication
- 100% Cotton



PREMIUM CONTRAST TEE

- Regular fit tee
- Feature contrast set in rib and soft lightweight fabrication
- Solids: 100% Cotton
Heather grey: 90% Cotton / 10% Polyester



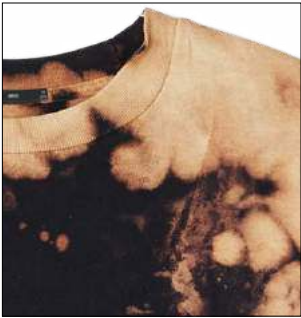
BLEACH TIE DYE TEE

- Regular fit bleach tie dyed short sleeve tee
- Feature set in rib trims and a heavyweight jersey fabrication
- 100% Cotton



BLEACH TIE DYE LONG SLEEVE TEE

- Regular fit bleach tie dyed long sleeve tee
- Feature set in rib trims and a heavyweight jersey fabrication
- 80% Cotton / 20% Polyester



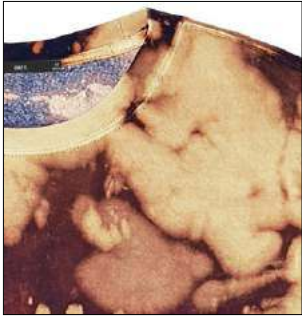
BLEACH TIE DYE HOODED FLEECE

- Regular fit bleach tie dyed hooded fleece
- Feature pouch pocket, rib trim and set in sleeves
- 80% Cotton / 20% Polyester



BLEACH TIE DYE CREW FLEECE

- Regular fit bleach tie dyed crew neck fleece
- Feature rib trims and set in sleeves
- 80% Cotton / 20% Polyester



BASIC PULLOVER HOOD FLEECE

- Regular fit hooded fleece
- Feature set in sleeves, and pouch pocket at front
- SOLID: 80% Cotton / 20% Polyester;
HEATHER GREY: 52% Cotton / 48% Polyester



BASIC BOX CREW NECK FLEECE

- Oversized fit crew neck fleece
- Feature set in rib trims
- 50% Cotton / 50% Polyester



BASIC ZIP HOOD FLEECE

- Regular fit hooded zip fleece
- Feature silver zipper closure
- SOLID: 80% Cotton / 20% Polyester;
HEATHER GREY: 52% Cotton / 48% Polyester



CUSTOM PIGMENT HOODED FLEECE

- Custom fitt pigment dyed fleece pullover hoodie
- Feature set in sleeves, pouch pocket at front, and heavyweight fleece fabrication
- 80% Cotton / 20% Polyester



CUSTOM PIGMENT CREW FLEECE

- Custom box fit pigment dyed fleece crew neck
- Feature set in rib trims and a heavyweight fleece fabrication
- 80% Cotton / 20% Polyester



PRINTABLE FIT GUIDE

CUSTOM PIGMENT ANORAK HOODED FLEECE

- Custom box fit pigment dyed anorak hooded fleece
- Features set in rib trims, silver zipper and a heavyweight fleece fabrication
- 80% Cotton / 20% Polyester



CUSTOM PIGMENT MOCK NECK FLEECE

- Custom box fit pigment dyed mock neck fleece
- Feature set in rib trims, silver zipper, and a heavyweight fleece fabrication
- 80% Cotton / 20% Polyester



HOODED SNAP COACHES JACKET

- Regular fit raglan sleeves hooded snap coaches jacket
- Feature tricot lining and snap closure
- Shell: 100% Nylon
Lining: 100% Polyester



PRINTABLE FIT GUIDE

CLASSIC COACHES JACKET

- Regular fit raglan sleeves coaches jacket
- Feature tricot lining and snap closure
- Shell: 100% Nylon
- Lining: 100% Polyester



ANORAK PULLOVER HOOD

- Regular fit raglan sleeves anorak pullover hood jacket
- Feature Tricot lining, patch pockets zipper closure and elastic cuffs.
- 100% Nylon



OBEY

WWW.OBEYCLOTHING.COM
WWW.OBEYGIANT.COM